

KOBELCO

SUPER LIFTERS

FULL-HYDRAULIC CRAWLER CRANES

7000 Series



 **KOBE STEEL, LTD.**

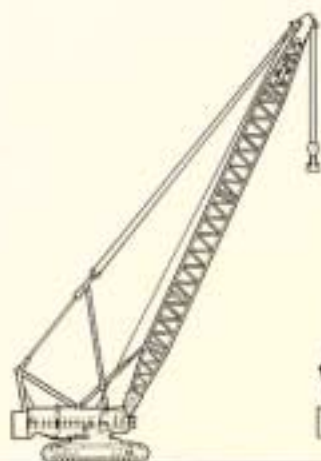


CRANES FOR ANY LIFTING NEEDS

The 7000 Series Super Lifters adapt to the requirements of any job, be it construction of multi-story buildings, major bridges, or chemical plants and power plants. High access, long outreach, or heavy lifting — a single Super Lifter meets every need.

The Super Lifters provide:

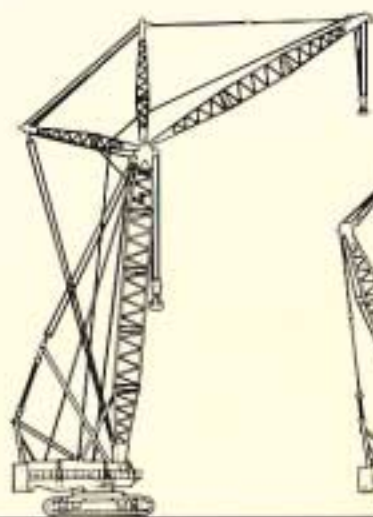
- A full array of attachments
- Precise full hydraulic control
- Powerful hydraulic drum drive
- Easy assembly and disassembly
- A spacious cab carefully designed for comfortable operation



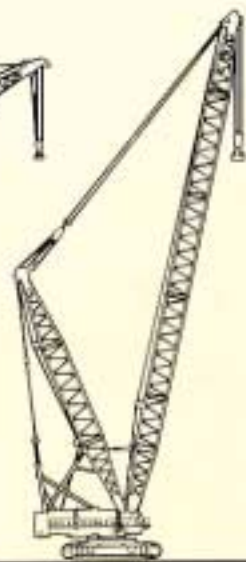
CRAWLER CRANE



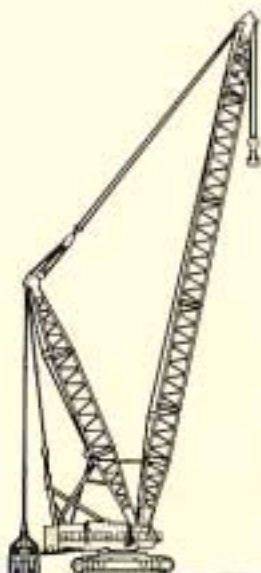
FIXED JIB



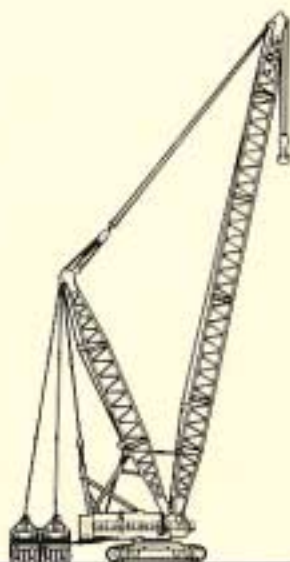
LUFFING JIB



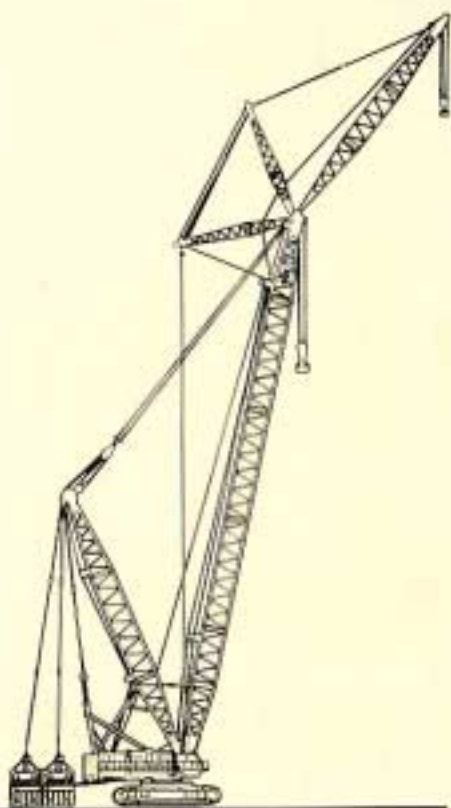
HEAVY LIFT (HL)



SUPER HEAVY LIFT (SHL)



SPECIAL SUPER HEAVY LIFT (SSHL)



SSHL WITH LUFFING JIB

CRANES THAT LIFT MORE



LARGE-CAPACITY DRUMS THAT ENSURE SUPER LIFTS

The 7000 Series Super Lifters are equipped with large-capacity front and rear load-hoisting drums, each powered by a pair of two-speed twin hydraulic motors that can provide either high line speed or high torque as the job demands.



THE BIG ENGINE THAT ENSURES SUPER POWER

The Super Lifters are powered by a powerful and fuel-efficient direct-injected diesel engine. Ample power reduces stress to both the engine itself and the hydraulic system and also ensures long and dependable service.



A LIFT ENHANCER BOOSTS LIFTING POWER

For maximum stability and lifting power, the Super-Heavy Lift (SHL) and the Special Super Heavy Lift (SSHL) feature a self-propelled trailing counterweight that attaches behind the main counterweight and follows the crawler crane in swing and travel movements.

A carbody counterweight is also available for a quick and easy increase in stability and lifting capacity.



Trailing counterweight



Carbody counterweight

PRECISION



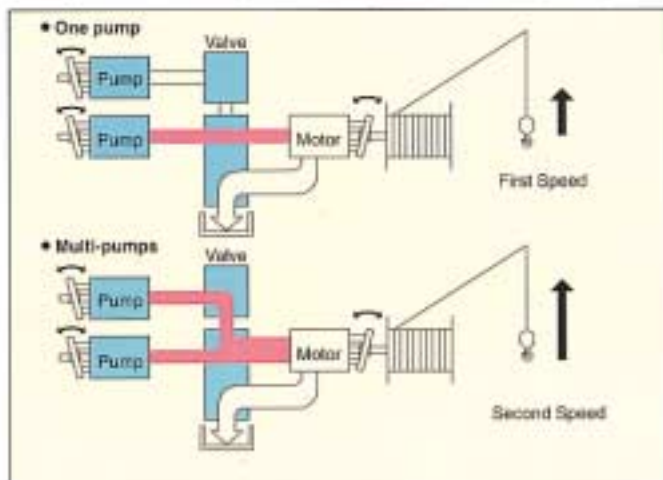
PRECISE FULL HYDRAULIC CONTROL

The full hydraulic system provides positive, precise control over each function. Accurate, dependable control in direct proportion to lever movement guarantees steady positioning when handling extremely heavy loads.

The large-capacity variable displacement pumps make possible a wide range of line speeds.

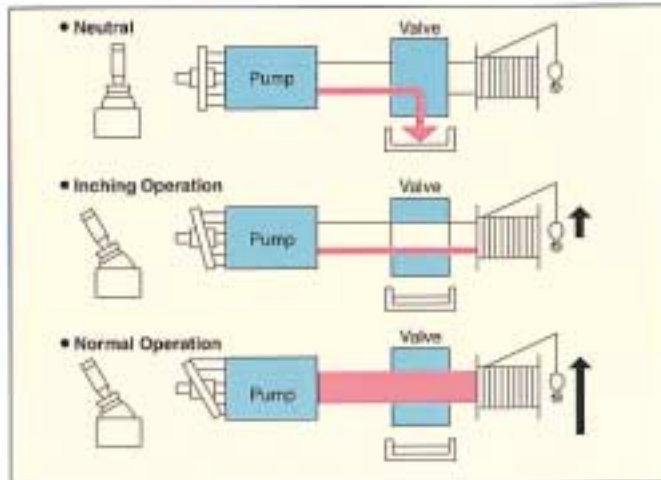
SELECTABLE WORKING MODES

The operator can choose either high line speeds with low torque for short cycle time, or low speeds with high torque for heavy lifting.



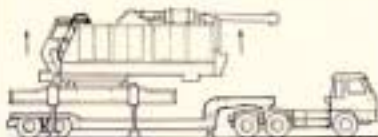
ULTRA-SLOW SPEED

Selection of ultra-slow speed cuts pump discharge to a minimum for exact inching operations.

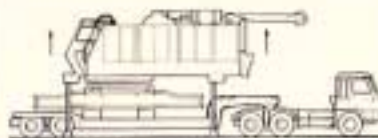


EASY ASSEMBLY

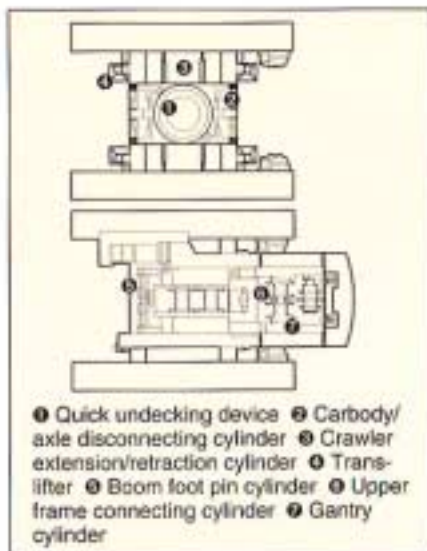
TRANS-LIFTER



The lower trans-lifter jack cylinders are extended, and a trailer is positioned beneath the carbody.



The upper is supported by upper trans-lifter and carbody is separated by "Quick undecking device".



1 Quick undecking device 2 Carbody/axle disconnecting cylinder 3 Crawler extension/retraction cylinder 4 Trans-lifter 5 Boom foot pin cylinder 6 Upper frame connecting cylinder 7 Gantry cylinder

FAST ASSEMBLY AND DISASSEMBLY

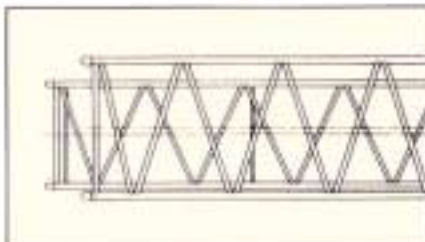
Hydraulically powered pins, hydraulic jacks, the undecking device, and nested booms make possible a modular construction that allows quick and easy assembly and disassembly when transporting the crane.



Boom foot pin cylinders



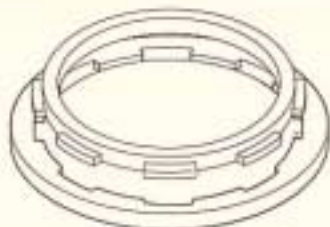
Reeving winch



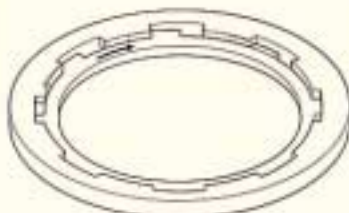
Nesting booms

By nesting the jib midsection inside the main midsection boom, less space is needed for storage and fewer trucks are needed for transporting.

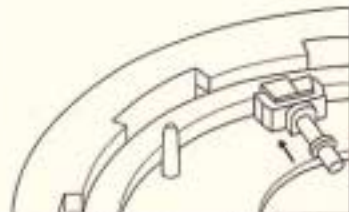
QUICK UNDECKING DEVICE



The undecking device consists of an inner ring attached to the upper frame and an outer ring attached to the lower frame.



When joining the upper and lower frames, the projections of the inner ring are aligned with the slots of the outer ring, and the swing lock pin is inserted, causing the inner ring to rotate.



The inner ring rotates until its block strikes the stopper of the outer ring, and the fixing blocks are then extended by hydraulic cylinders to lock the assembly.

TILTING AND ELEVATING CAB

The cab can be elevated and tilted backwards for optimum operating visibility.



SPECIFICATIONS

MODEL		7250	7300	7450	7650	7800/SL13000	
LIFTING CAPACITY							
Max. Lift (Heavy/Light)	Std-Boom Only	ton x m	250x5.0/100x10.0	300x5.0/120x10.0	450x5.8/230x11.1	650x6.0/400x10.0	750x5.6/450x10.0
	Std-Fixed Jib	ton x m	25x26.0	25x34.0	40x18.0	N/A	N/A
	Std-Luffing Jib	ton x m	50x14.0	80x14.0	99x16.0	230x16.0	230x22.0
	HL	ton x m	N/A	N/A	221.5x12.0	N/A	450x10.0
	SHL	ton x m	N/A	N/A	330x10.0	N/A	450x18.0
	SSHL-Crane	ton x m	N/A	N/A	450x12.0	N/A	800x14.0
	SSHL-Luffing Jib	ton x m	N/A	N/A	156x16.0	N/A	396x28.0
Max. Length (Heavy/Light)	Std-Boom Only	m	42.67/94.49	42.67/97.54	42.67/97.54	102	42.67/115.8
	Std-Fixed Jib	m	73.15+36.58(L)	85.34+36.58(L)	85.34+33.53(L)	N/A	N/A
	Std-Luffing Jib	m	61.76+54.86	60.96+54.86	70.10+67.08	78.0+72.0	85.34+73.15
	HL	m	N/A	N/A	97.54	N/A	115.8
	SHL	m	N/A	N/A	121.9	N/A	121.9
	SSHL-Boom Only	m	N/A	N/A	121.9	N/A	115.8
	SSHL-Luffing	m	N/A	N/A	79.25+73.15	N/A	85.34+79.25

PERFORMANCE

Line Speed	Hook Front	m/min	90/60/45/30	90/60/45/30	100/59/25/15	100/44	97/57/49/29
	Hook Rear	m/min	90/60/45/30	90/60/45/30	100/59/25/15	100/44	97/57/49/29
	Ultra-slow Speed		Available	Available	N/A	Available	Available
	Boom	m/min	20	20	25	50/22	26
Swing Speed		rpm	2.0	1.9	0.9	0.6	0.6
Travel Speed		rpm	1.2/0.6	1.0/0.5	1.2/0.6	1.0/0.6	0.6/0.3

POWER PLANT

Engine Make		MITSUBISHI	MITSUBISHI	CUMMINS	CUMMINS	CUMMINS
Engine Model		8DC9T	8DC9T	KTA-19-C600	KTA-19-C600	KTA-19-C600
Output	PS/rpm	345/2,000	345/2,000	609/2,100	600/2,000	600/2,000

EQUIPMENT

Carbody Weight /(+Add Weight)	ton	30.0	22.0 /(+15.5)	N/A /(+10)	N/A /(+84)	N/A /(+37.0)	
Trailing Counterweight (SHL/SSHL)	ton	N/A	N/A	120/240	N/A	240/480	
Assembly	Lower Translifter		Opt.	Opt.	Opt.	Opt.	
	Upper Translifter		Opt.	Opt.	N/A	N/A	
	Boom Foot Pin Cylinder		Opt.	Opt.	Opt.	Opt.	
	Axle Disconnecting Cylinder		Mono block	Mono block	Opt.	Opt.	Opt.
	Quick Undecking Device		Opt.	Opt.	Opt.	Opt.	Opt.
	Upper Frame Connecting Cylinder		N/A	N/A	Opt.	Opt.	Opt.
	Gantry Cylinder		Opt.	Opt.	Opt.	Opt.	Opt.
	Reeving Winch		Opt.	Opt.	Opt.	Opt.	Opt.
	Crawler Expanding Cylinder		Opt.	Opt.	Opt.	Opt.	Opt.
	Mast Foot Pin Cylinder		N/A	N/A	N/A	Opt.	Opt.
	Crawler Connecting Cylinder		N/A	N/A	N/A	Opt.	Opt.
	Tilting & Elevating Cylinder		N/A	N/A	Opt.	Opt.	Opt.
	Nesting Boom		Std.	Std.	Std.	Std.	Std.

N/A: not available

Note: Due to our policy of continual product improvement, all designs and specifications are subject to change without advance notice.

 **KOBE STEEL, LTD.**

ENGINEERING & MACHINERY DIVISION
Construction Machinery & Compressor Group
KOBELCO Bldg., 3-2, Toyo 2-chome, Koto-ku, TOKYO, 135 Japan
Tel: (03)5634-5312/ Fax: (03)5634-5533

Bulletin No. SUPER LIFTER-102

970101TF Printed in Japan