

**KOBELCO**

# HEAVY DUTY BASE MACHINE FOR FOUNDATION WORK

## BM700HD-2

**Max. Lifting Capacity: 70.0 at 3.7 m**

**Max. Boom Length: 54.9 m**

**Max. Fixed jib Combination: 42.7 + 18.3 m**

## BM800HD-2

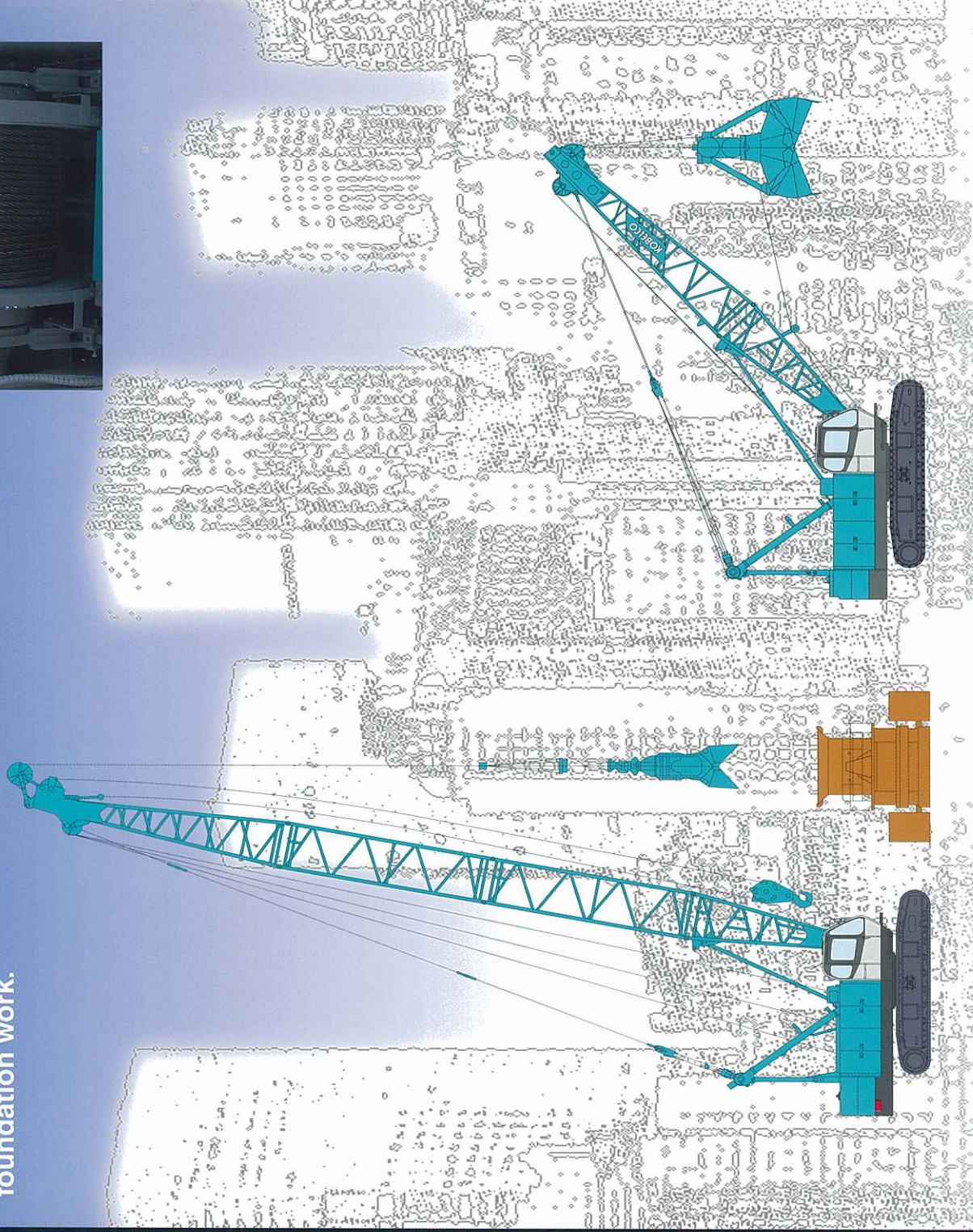
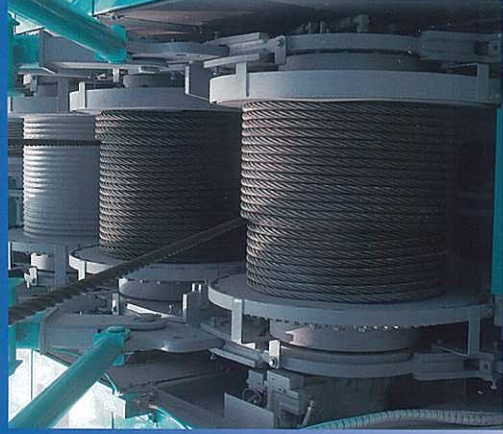
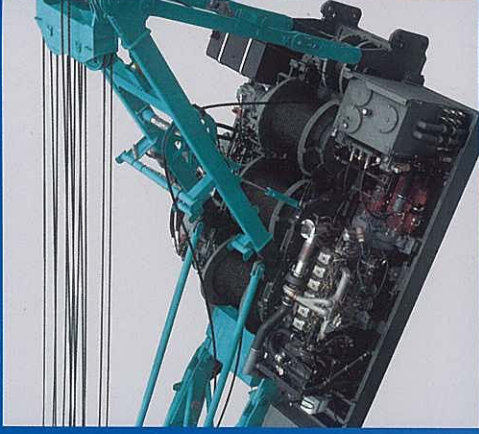
**Max. Lifting Capacity: 80.0 at 3.7 m**

**Max. Boom Length: 54.9 m**



# A NEW GENERATION OF BASE MACHINES FOR HEAVY-DUTY FOUNDATION WORK

Heavy-duty reliability from wet-type disc brakes. Powerful and large capacity drums to handle any job with power to spare. Drawing on long experience in crane manufacture, KOBELCO researched the bottom line in boosting operating efficiency in civil engineering and foundation work, and has unveiled a new generation of base machines. The BM700HD-2/BM800HD-2 feature power and precision in operations, simple controls and comprehensive safety features. Economic to run, easy to transport, kind to operator and environment alike. In every respect the BM700HD-2/BM800HD-2 deliver a performance that sets new standards for heavy-duty foundation work.

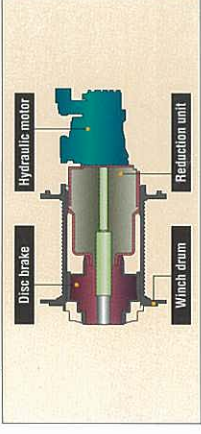


## PERFORMANCE

### Innovative Wet-Type Disc Brake System

KOBELCO's new oil cooled wet-type multi-disc brake system is first in its class and provides quiet, dependable braking power. Multiple discs are self-adjusting and self-equalizing. Forced oil circulation keeps brake temperatures cooler during long, continuous operations and maximizes smooth brake operation. The completely enclosed system eliminates the possibility of outside contamination, providing years of problem-free service life. The low brake pedal effort reduces operator fatigue when the machine is working in the optional free-fall mode.

Wet-type disc brake installed in winch drum:



### Extremely Powerful Winches

The BM700HD-2/BM800HD-2's powerful winches boast a rated single line pull of 108 kN (11 tf), reducing the number of parts of line and achieving a line speed of 120 m/min (first layer). This results in dynamic lifting capacities and continuous trouble-free operations.

### Large Capacity Drums

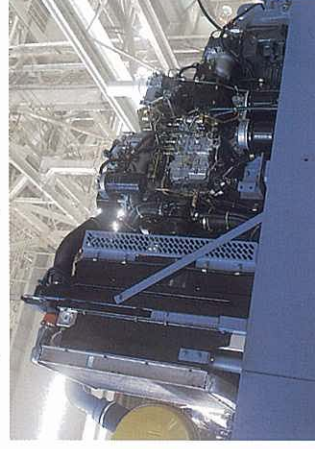
KOBELCO's innovative internal disc brake system allows for the use of wider drums to avoid the chance of uneven winding, while extending the service life of the wire rope.

### Third Drum (Option)

An optional third drum is now full sized, allowing for more attachment options and better operation coordination.

### High Output 235 kW (320 PS) Engine

The high output engine can take on the toughest job with power to spare. The computer-controlled mechatronic Engine Sensing System (ESS) keeps speed changes to a minimum during multi-function operations, to get the job done smoothly and efficiently.



## CONTROLS & CAB



### Roomy, Comfortable Cab

Operator comfort is ensured by vibration-reducing rubber cab-mounts, a fully adjustable, upholstered seat, and an air conditioner with fresh-air vents. Reinforced tinted glass windows reduce glare, and the semi-short levers and other control devices are ergonomically located and arranged for easy control.

### Free-Fall and Power Lowering

A choice of either power lowering mode or free-fall mode can be selected for the winch drum according to requirements.

### Free-Fall Control Switches

The free-fall control switches, strategically located on the hoist levers, allow the operator to engage free-fall whenever desired without removing his hands from the control levers.



### Inching Control Switch

The red switch on the boom lever grip allows easy inching control for hoist, boom hoist, and travel that the operator can activate without taking his hands off the boom hoist lever.

### Drum Speed Controller

Speeds for main winch, auxiliary winch and boom hoist can be set independently with trimmer controls.



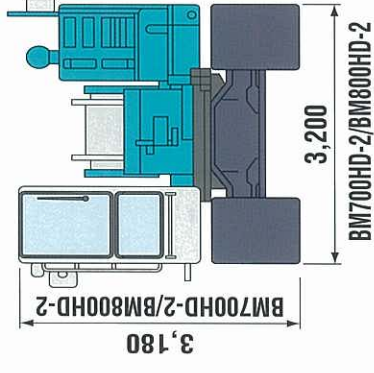
## Electric Throttle Control

Sensitive engine control is assured by an electric throttle with a twist grip.

## TRANSPORTATION

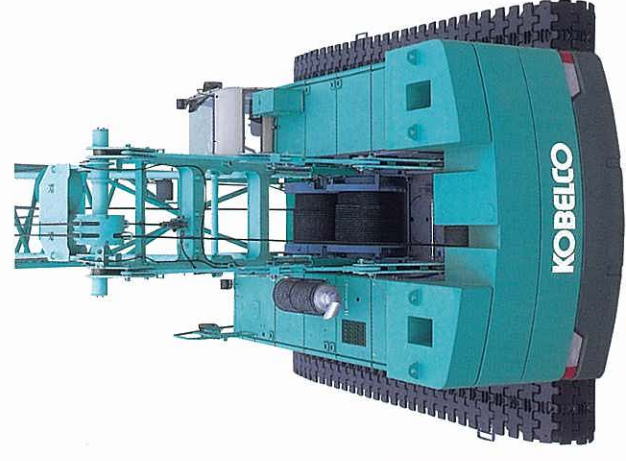
### Transportation

An overall width of 3.2 m and an overall transporting height of less than 3.2 m (base machine), help reduce transportation cost.



## Assembly/Disassembly

- Boom and guy cables are connected easily, and upper spreader features automatic stowing for disassembly.
- Gantry hoist cylinder is supplied as standard to simplify gantry raising.
- Counterweight divides horizontally for easy assembly, disassembly and transport.
- Double-tapered connecting pins for bottom of lower boom.
- Reinforced lower boom can cantilever to 36 m, shortening assembly work.



## SAFETY

### Load Moment Indicator System



An easy-to-read LCD display is installed with the overload prevention mechanism, indicating rated and actual loads and other useful data.

### Function Lock Lever



Function lock lever prevents accidental operation when the operator enters or leaves the cab.

### Key-Controlled Release Switches

Safety enhancing mechanisms can be individually engaged or cancelled for specific operational needs by using these

keys such as free-fall operation and safety function. These keys can be kept by safety officer to prevent any human-error.



### Swing Flashers

Swing flashers and a warning buzzer alert in vicinity when the machine is swinging.

### Smooth-Stop Device for Boom Lowering

The smooth-stop device for boom lowering prevents dangerous swaying of the load due to sudden automatic stops.

## SIMPLIFIED MAINTENANCE

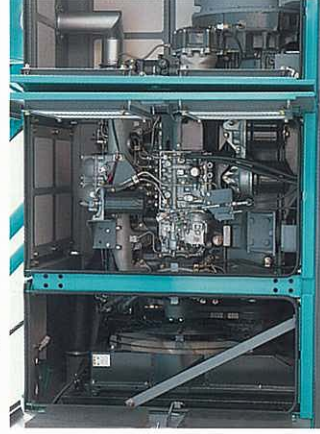
### Multi-Display

The easy-to-read LCD multi-display provides current status information on such functions as engine rpm, maintenance and on-board trouble-shooting, providing the operator with an ongoing real-time assessment of the machine's conditions at a glance.



### Easy Maintenance

The new lateral engine positioning means that just opening the power plant cover gives ready access for checks and servicing.



## STANDARD EQUIPMENT

### Main Machine

- Boom hoist pedal • Air conditioner
- Free-fall function for main and aux. winch

### Safety Device

- Drum safety pawl • Boom backstops
- Hook over hoist auto-stop device
- Swing lock pin • Signal horn
- Overload alarm lamp • Cab top guard
- Fire extinguisher

### Transportation

- Retractable crawlers
- Gantry cylinder

### Others

- Electric fuel pump • Tool kits
- Operator's manual

## OPTIONAL EQUIPMENT

### Main Machine

- Drum rotation indicators (front and rear drum) • Third drum • Hydraulic tagline
- Hydraulic outlet • Electric fan • Foot throttle • One way call
- Service platform for machine room

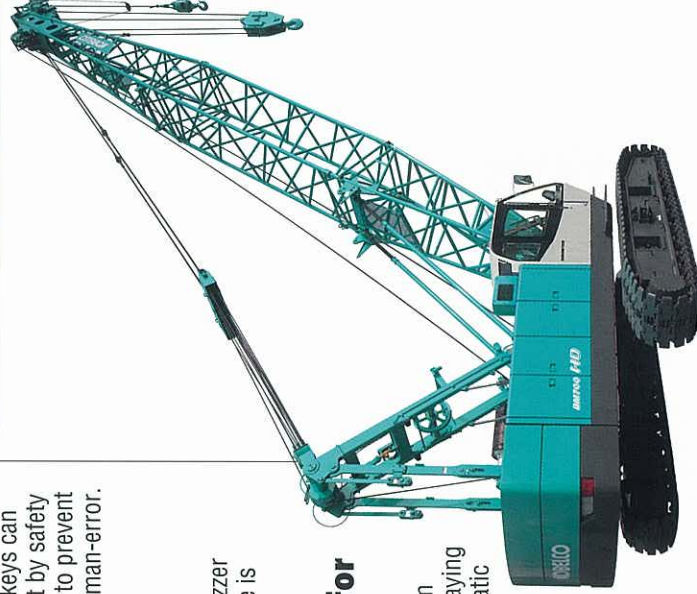
### Attachment

- Insert boom • Hook • Auxiliary sheave
- Fixed jib (BM700HD-2)

### Hydraulic Outlet (Option)

12 pairs of hydraulic outlet are available.

No. of pumps	Two	One	One	One
No. of pair of ports	1	1	1	9
Max. pressure kPa	30.9	30.9	7.8	20.6
Max. oil flow (liters/min)	460	200	73	73
Pump input power (kW)	162	71	10	29



Note: This catalog may contain photographs of machines with specifications, attachments and optional equipment not certified for operation in your country. Please consult KOBELCO for those items you may require. Due to our policy of continual product improvements all designs and specifications are subject to change without advance notice.

Copyright by KOBELCO CRANES CO., LTD. No part of this catalog may be reproduced in any manner without notice.

### KOBELCO CRANES CO., LTD.

17-1, Higashigotanda 2-chome, Shinagawa-ku, Tokyo, 141-8626 JAPAN  
Tel: +81-3-5789-2130 / Fax: +81-3-5789-3372

Inquiries To: