

HYDRAULIC CRAWLER CRANE

KOBELCO

BM800HD

Max. Lifting Capacity:
80 M-tons

Max. Boom Length:
54.9 m

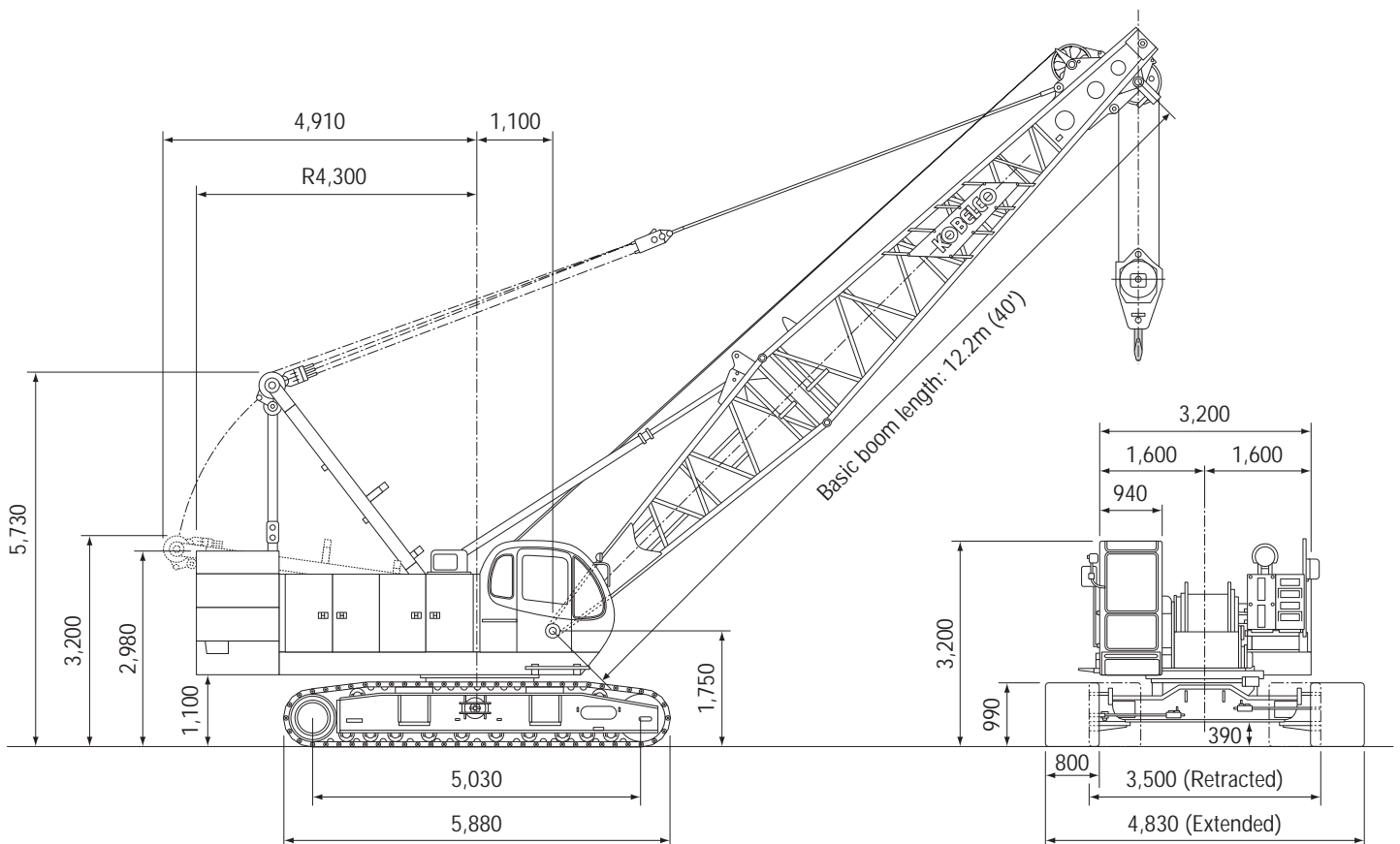
S P E C I F I C A T I O N S

Main Boom	
Max. Lifting Capacity	80 t/3.7 m
Basic Boom Length	12.2 m
Max. Length	54.9 m
Main & Aux. Winch	
Max. Line Speed	100 m/min (1st layer)
Max. Line Pull	196 kN
Wire Rope Dia.	26 mm
Brake Type	Wet-type multi-disc brake
Free-Fall	Free-fall control switch
Boom Winch	
Max. Line Speed	65 m/min
Wire Rope Dia.	18 mm
Working Speed	
Swing Speed	3.5 min ⁻¹
Travel Speed	1.7/1.1 km/h

Power Plant	
Model	Mitsubishi 6D24-TE1
Engine Output	184 kW/2,000 min ⁻¹
Fuel Tank Capacity	400 liters
Hydraulic System	
Pumps	3 variable displacement
Max. Pressure	30.9 MPa
Hydraulic Tank Capacity	450 liters
Weight	
Operating Weight	Approx. 75 t
Counterweight	25.8 t
Transport Weight	45.1 t (Main machine with crawler)
Ground Pressure	82 kPa

GENERAL DIMENSIONS

Unit: mm



KOBELCO CONSTRUCTION MACHINERY CO., LTD.

MAIN BOOM LIFTING CAPACITY

BM800HD

Rated loads in metric tons for 360° working area (Counterweight: 25.8 t)

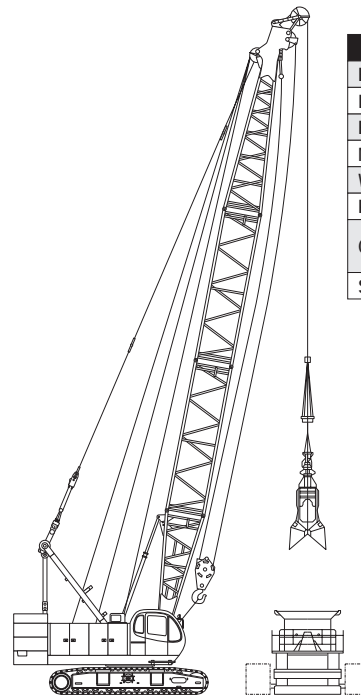
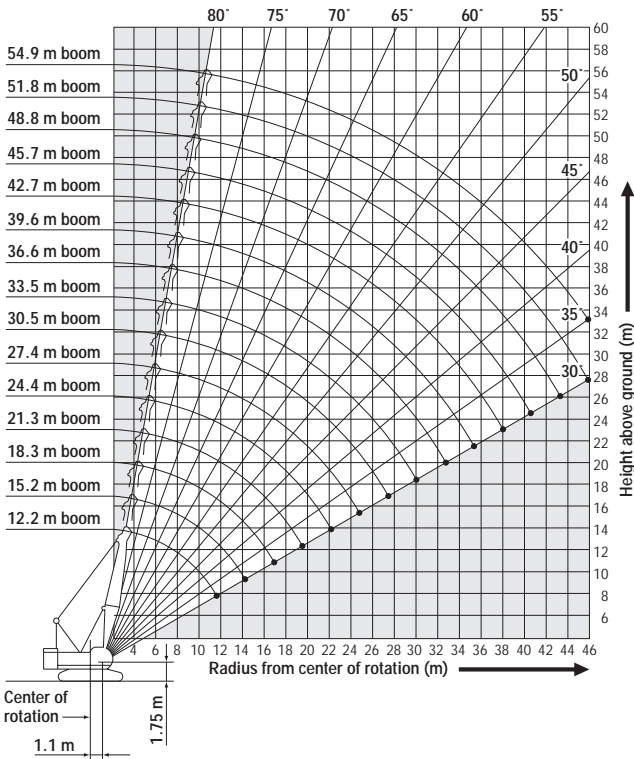
Crawlers fully extended

Boom length m (ft)	12.2 (40)	15.2 (50)	18.3 (60)	21.3 (70)	24.4 (80)	27.4 (90)	30.5 (100)	33.5 (110)	36.6 (120)	39.6 (130)	42.7 (140)	45.7 (150)	48.8 (160)	51.8 (170)	54.9 (180)	
Working radius (m)	3.7	80.0														
	4.0	70.5	64.2/4.3	57.2/4.8												
	5.0	56.5	56.4	56.3	51.2/5.3	45.9/5.9										
	6.0	45.7	45.6	45.5	45.5	45.4	41.1/6.4	36.5/6.9								
	7.0	36.3	36.2	36.1	36.1	36.0	35.9	35.8	32.4/7.5							
	8.0	30.0	29.9	29.8	29.7	29.6	29.6	29.4	29.4	29.3	26.7/8.5					
	9.0	25.5	25.4	25.3	25.2	25.1	25.0	24.9	24.9	24.8	24.7	22.0	19.9/9.6			
	10.0	22.2	22.0	21.9	21.9	21.7	21.7	21.5	21.5	21.4	21.3	21.2	18.7	17.7/10.1	16.3/10.6	13.2/11.2
	12.0	15.9/11.8	17.3	17.2	17.1	17.0	16.9	16.8	16.7	16.6	16.5	16.5	16.4	16.2	13.5	13.2
	14.0		14.1	14.1	14.0	13.8	13.8	13.6	13.6	13.4	13.3	13.3	13.2	13.1	12.9	12.8
	16.0		13.0/14.5	11.9	11.8	11.6	11.5	11.4	11.3	11.2	11.1	11.0	10.9	10.8	10.7	10.6
	18.0			10.7/17.1	10.1	9.9	9.9	9.7	9.7	9.5	9.4	9.3	9.2	9.1	9.0	8.9
	20.0				9.0/19.8	8.6	8.6	8.4	8.3	8.2	8.1	8.0	7.9	7.8	7.7	7.5
	22.0					7.6	7.5	7.4	7.3	7.2	7.0	7.0	6.9	6.7	6.6	6.5
	24.0					7.5/22.4	6.7	6.5	6.5	6.3	6.2	6.1	6.0	5.9	5.8	5.6
	26.0						6.3/25.0	5.8	5.8	5.6	5.5	5.4	5.3	5.1	5.0	4.9
	28.0							5.3/27.7	5.2	5.0	4.9	4.8	4.7	4.5	4.4	4.3
	30.0								4.7	4.5	4.4	4.3	4.2	4.0	3.9	3.8
	32.0								4.6/30.3	4.1	3.9	3.8	3.7	3.6	3.5	3.3
	34.0									3.9/30.3	3.6	3.5	3.3	3.2	3.1	2.9
36.0										3.3/35.6	3.1	3.0	2.9	2.7	2.5	
38.0											2.8	2.7	2.5	2.4	2.2	
40.0											2.8/38.2	2.4	2.2	2.1	1.9	
42.0												2.3/40.9	2.0	1.8	1.6	
44.0													1.8/43.5	1.5	1.3	
46.0														1.3	1.1	

Note: Rating do not exceed 75 % of tipping load. Deduct the weight of main hook, and other load handling accessories from the ratings shown.
 Rating inside shown in are determined by the strength of the boom or other structural components.
 When actually operating the machine, strictly observe the instruction of the operator's manual.

WORKING RADIUS

HAMMER GRAB



Recommended Specification	
Boom Length	21.3 m
Lifting Capacity at 7m	36.1 t
Bucket Rated Load	110 kN
Max. Line Pull (Approx.)	200 kN
Wire Rope Dia.	26 mm
Power PLant	184 kW
Capacity of Wire Rope by Drum Layer	1st 42 m
	2nd 45 m
Suitable Layer	1st to 2nd

Note: Due to our policy of continual product improvements all designs and specifications are subject to change without advance notice.

KOBELCO CONSTRUCTION MACHINERY CO., LTD.

3-13, Nihonbashi 1-chome, Chuo-ku, TOKYO, 103-8246 JAPAN
 Tel: ++81 (0) 3-3278-7080/ Fax: ++81 (0) 3-3278-7141