

HYDRAULIC CRAWLER CRANE



CKE1350

Max. Lifting Capacity: 36.0 t
Max. Boom Length: 48.6 m
Max. Combination:
48.6 + 53.3 m

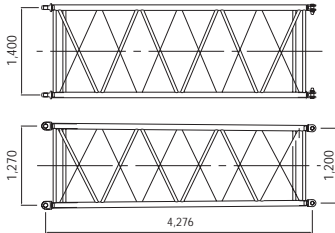
PRELIMINARY

LUFFING JIB SPECIFICATIONS

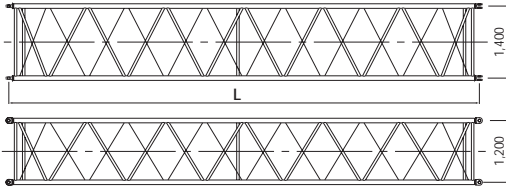
SPECIFICATIONS OF ATTACHMENTS

Tapered Jib

Weight: 407 kg



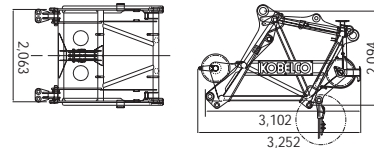
Insert Jib



	L (mm)	Weight (kg)
3.0 m	3,048	305
6.0 m	6,096	520
9.0 m	9,144	741

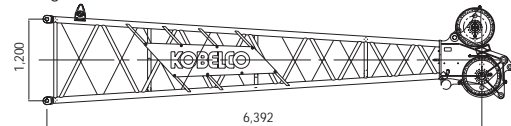
Tower cap

Weight: 2,180 kg



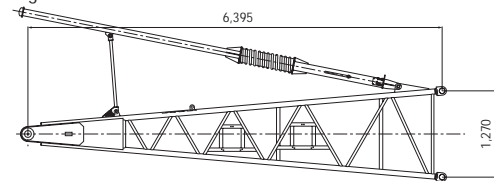
Upper Jib

Weight: 1,200 kg



Lower Jib

Weight: 1,200 kg



LUFFING JIB LIFTING CAPACITY (Boom Angle Fixed Type 88° and 70°)

(Counterweight: 53.0 t, Carbody Weight: 10.0 t)

Unit: Metric tons

Boom length	33.4 m												36.5 m													
	22.9 m		29.0 m		35.1 m		41.1 m		47.2 m		53.3 m		22.9 m		29.0 m		35.1 m		41.1 m		47.2 m		53.3 m			
Jib length	88°	70°	88°	70°	88°	70°	88°	70°	88°	70°	88°	70°	88°	70°	88°	70°	88°	70°	88°	70°	88°	70°	88°	70°		
11.3 m	36.0																									
12.0 m	36.0														35.7											
14.0 m	33.0		30.6												32.5	29.9										
16.0 m	28.6		28.1		26.2										28.8	27.4	25.3									
18.0 m	23.2		23.6		23.7		21.7								23.5	23.9	23.3	20.9								
20.0 m	19.3		19.8		19.9		20.3		17.0						19.5	19.9	20.0	19.6			17.1					
22.0 m	16.2		16.8		17.0		17.5		16.4		12.4				16.4	16.9	17.1	17.6			16.4		12.3			
24.0 m	13.7		14.5		14.7		15.1		14.9		11.8				13.8	14.6	14.8	15.2			15.0		11.8			
26.0 m	11.3		12.5		12.8		13.2		13.0		11.3				11.5	12.6	12.9	13.3			13.1		11.4			
28.0 m		12.7	10.9		11.2		11.6		11.4		10.9					10.9	11.3	11.6			11.5		10.9			
30.0 m		11.7	9.4		9.9		10.2		10.1		9.9				11.2	9.5	9.9	10.3			10.1		9.9			
32.0 m		10.8	7.9	10.3	8.8		9.1		9.0		8.8				10.5	8.1	8.8	9.1			9.0		8.8			
34.0 m		9.9		9.7	7.7		8.1		8.0		7.8				9.7		9.1	7.8			8.1		8.0		7.8	
36.0 m		9.2		9.0	6.8	8.5	7.2		7.1		7.0				9.0		8.7	6.8	8.2		7.2		7.2		7.0	
38.0 m				8.3	5.8	8.1	6.4		6.4		6.2						8.1	5.9	7.8		6.4		6.4		6.3	
40.0 m				7.8		7.6	5.7	7.0	5.7		5.4						7.5		7.3	5.7	6.7		5.7		5.3	
42.0 m				7.2		7.1	5.0	6.8	5.1	6.2	3.7						7.0		6.8	5.0	6.5	5.1			3.6	
44.0 m						6.6	4.2	6.3	4.5	6.0									6.3	4.4	6.0	4.5	5.4			
46.0 m						6.2		5.9	3.8	5.6									5.9		5.7	3.5	5.4			
48.0 m						5.8		5.5	2.7	5.3									5.6		5.3	2.4	5.0		4.3	
50.0 m								5.2		4.9											5.0		4.7		4.3	
52.0 m								4.9		4.6											4.7		4.3		4.0	
54.0 m								4.6		4.3											4.4		4.0		3.7	
56.0 m										4.0													3.7		3.4	
58.0 m										3.7													3.5		3.2	
60.0 m										3.5													3.2		2.9	
62.0 m																									2.7	
64.0 m																										2.5

Note: Ratings according to DIN 15018/3 and prEN 13000.

Ratings shown in are determined by the strength of the boom or other structural components.

LUFFING JIB LIFTING CAPACITY (Boom Angle Fixed Type 88° and 70°)

(Counterweight: 53.0 t, Carbody Weight: 10.0 t)

Unit: Metric tons

Boom length	39.5 m												42.6 m											
	22.9 m		29.0 m		35.1 m		41.1 m		47.2 m		53.3 m		22.9 m		29.0 m		35.1 m		41.1 m		47.2 m		53.3 m	
	88°	70°	88°	70°	88°	70°	88°	70°	88°	70°	88°	70°	88°	70°	88°	70°	88°	70°	88°	70°	88°	70°	88°	70°
12.0 m	34.6													33.2										
14.0 m	31.4		28.8											30.2		27.4								
16.0 m	28.8		26.4		23.8									27.9		25.2		22.6						
18.0 m	23.7		24.1		22.1		19.9							23.9		23.3		21.0		18.8				
20.0 m	19.6		20.1		20.2		18.6		16.5					19.8		20.2		19.6		17.6		15.4		
22.0 m	16.5		17.1		17.2		17.4		15.5		12.3			16.6		17.2		18.0		16.5		14.5		12.4
24.0 m	13.9		14.6		14.8		15.3		14.5		11.8			14.0		14.7		15.5		15.4		13.6		11.8
26.0 m	11.6		12.7		12.9		13.3		13.1		11.4			11.7		12.7		13.5		13.4		12.9		11.3
28.0 m			11.0		11.3		11.7		11.5		10.9					11.1		11.8		11.8		11.6		10.7
30.0 m		10.7	9.5		10.0		10.3		10.2		10.0					9.6		10.4		10.4		10.2		10.0
32.0 m		10.1	8.2		8.8		9.2		9.0		8.9			9.5	8.2		9.2		9.2		9.2		9.1	8.9
34.0 m		9.3		8.7	7.8		8.2		8.0		7.9			9.0			8.1		8.2		8.1		7.9	
36.0 m		8.6		8.3	6.8		7.3		7.2		7.0			8.3		7.7	7.1		7.3		7.3		7.2	7.1
38.0 m		8.0		7.7	5.9	7.2	6.5		6.4		6.3			7.7		7.4	6.1	6.8	6.5		6.4		6.3	
40.0 m				7.2		6.9	5.7		5.7		5.3					6.9		6.6	5.8		5.8		5.3	
42.0 m				6.7		6.5	5.0	5.8	5.1		3.4					6.4		6.2	5.1	5.5	5.1		3.3	
44.0 m				6.2		6.0	4.4	5.7	4.6	5.0						6.0		5.8	4.4	5.4	4.6			
46.0 m						5.6		5.3	3.3	5.0								5.4		5.1	3.2	4.2		
48.0 m						5.3		5.0	2.2	4.6		3.8						5.0		4.7		4.2		
50.0 m						4.9		4.7		4.3		3.8						4.7		4.3		3.9		3.1
52.0 m								4.4		4.0		3.6								4.0		3.6		3.1
54.0 m								4.0		3.7		3.3								3.7		3.3		3.0
56.0 m								3.8		3.4		3.1								3.5		3.1		2.7
58.0 m										3.1		2.8										2.8		2.5
60.0 m										2.9		2.6										2.6		2.3
62.0 m										2.7		2.4										2.4		2.1
64.0 m												2.2												1.9
66.0 m												2.0												

Note: Ratings according to DIN 15018/3 and prEN 13000.

Ratings shown in are determined by the strength of the boom or other structural components.

Unit: Metric tons

Boom length	45.6 m												48.6 m											
	22.9 m		29.0 m		35.1 m		41.1 m		47.2 m		53.3 m		22.9 m		29.0 m		35.1 m		41.1 m		47.2 m		53.3 m	
	88°	70°	88°	70°	88°	70°	88°	70°	88°	70°	88°	70°	88°	70°	88°	70°	88°	70°	88°	70°	88°	70°	88°	70°
12.0 m	31.5													29.6										
14.0 m	28.8		26.0											27.1		23.9								
16.0 m	26.6		23.9		21.4									25.1		22.2		19.9						
18.0 m	24.1		22.2		19.9		17.6							23.5		20.6		18.6		16.3				
20.0 m	20.0		20.4		18.6		16.5		14.4					20.1		19.4		17.4		15.3		13.2		
22.0 m	16.7		17.3		17.5		15.5		13.5		11.4			16.9		18.1		16.4		14.4		12.5		10.3
24.0 m	14.1		14.8		15.6		14.6		12.7		10.9			14.2		15.5		15.5		13.6		11.7		9.9
26.0 m	11.8		12.8		13.6		13.5		12.0		10.3			11.9		13.3		13.6		12.8		11.0		9.4
28.0 m			11.1		11.9		11.8		11.4		9.7					11.5		11.9		11.9		10.5		8.9
30.0 m			9.6		10.4		10.4		10.3		9.2					10.0		10.5		10.5		10.0		8.4
32.0 m		9.1	8.3		9.2		9.3		9.1		8.8					8.6		9.2		9.3		9.2		8.0
34.0 m		8.6			8.1		8.2		8.1		8.4			7.9			8.1		8.3		8.1		7.7	
36.0 m		8.0		7.3	7.1		7.3		7.2		7.7			7.6			7.2		7.3		7.3		7.3	
38.0 m		7.4		7.0	6.2		6.5		6.5		6.9			7.0		6.3	6.2		6.5		6.5		6.9	
40.0 m		6.9		6.5		6.0	5.8		5.8		5.4			6.5		6.2				5.8		5.8		5.6
42.0 m				6.1	5.9	5.1			5.1		3.3						5.7		5.0	5.1		5.2		3.3
44.0 m				5.7		5.5	4.4	4.6	4.6								5.3		5.0	4.4	4.1	4.6		
46.0 m				5.3		5.1		4.6	3.1	3.8							4.9		4.6		4.1	3.0		
48.0 m						4.7		4.3		3.8									4.3		3.9		2.9	
50.0 m						4.4		4.0		3.6		2.7							4.0		3.5		2.9	
52.0 m						4.1		3.7		3.3		2.7							3.7		3.3		2.8	
54.0 m								3.4		3.0		2.7								3.0		2.6		
56.0 m								3.1		2.8		2.4									2.8		2.4	
58.0 m								2.9		2.5		2.2									2.5		2.1	
60.0 m										2.3		2.0											1.9	
62.0 m										2.1														
64.0 m										1.9														
66.0 m																								

Note: Ratings according to DIN 15018/3 and prEN 13000.

Ratings shown in are determined by the strength of the boom or other structural components.

BOOM & JIB ARRANGEMENT

LUFFING BOOM ARRANGEMENT

Boom length (m) ft	Boom arrangement
33.4 (110)	Base-D-C-A-A-Cap, Base-D-C-B-Cap
36.5 (120)	Base-D-C-A-B-Cap, Base-D-C-C-Cap
39.5 (130)	Base-D-C-A-A-B-Cap, Base-D-C-A-C-Cap
42.6 (140)	Base-D-C-A-B-B-Cap, Base-D-C-B-C-Cap
45.6 (150)	Base-D-C-A-B-C-Cap, Base-A-C-C-C-Cap
48.6 (160)	Base-D-C-A-A-B-C-Cap, Base-D-C-B-B-C-Cap

Base Boom Length and Luffing Boom Cap Length:

Base = 7.6 m (25'), Cap = 1.44 m (5')

Insert Boom:

A = 3.0 m (10'), B = 6.1 m (20'), C = 9.1 m (30'), D (Only for Luffing Boom) = 9.1 m (30')

JIB ARRANGEMENT CHART

Jib length (m) ft	Jib arrangement
22.9 (75)	Base-A-C-Tip
25.9 (85)	Base-A-B-C-Tip
29.0 (95)	Base-A-B-B-C-Tip
32.0 (105)	Base-A-B-C-C-Tip
35.1 (115)	Base-A-B-C-D-Tip
38.1 (125)	Base-A-B-B-C-D-Tip
41.1 (135)	Base-A-B-C-C-D-Tip
44.2 (145)	Base-A-B-C-D-D-Tip
47.2 (155)	Base-A-B-B-C-D-D-Tip
50.3 (165)	Base-A-B-C-C-D-D-Tip
53.3 (175)	Base-A-B-C-D-D-D-Tip

Base Jib Length and Jib Tip Length:

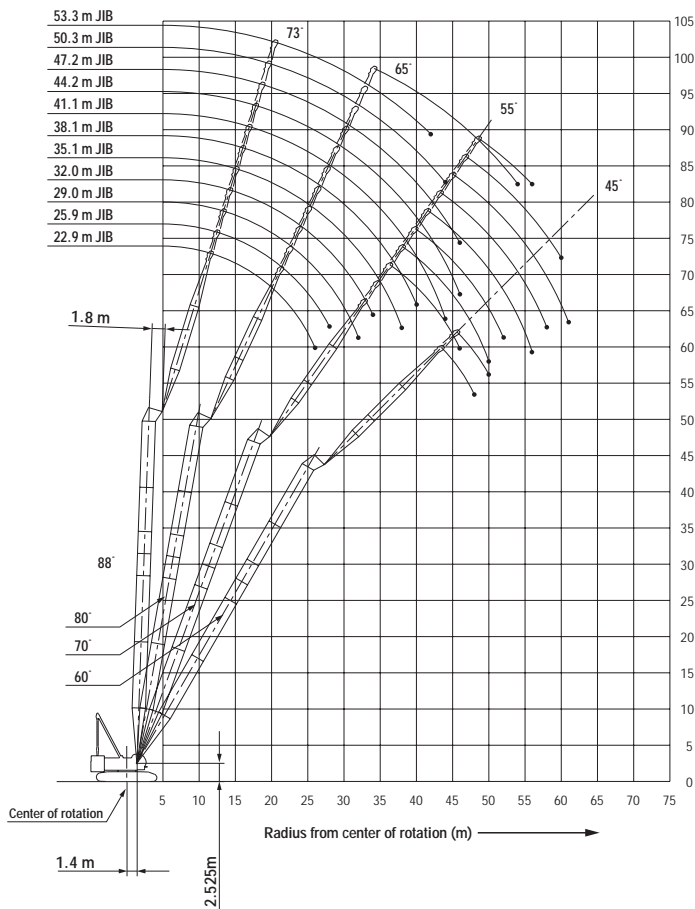
Base = 6.1 m (20'), Tip = 6.4 m (21')

Insert Luffing Jib:

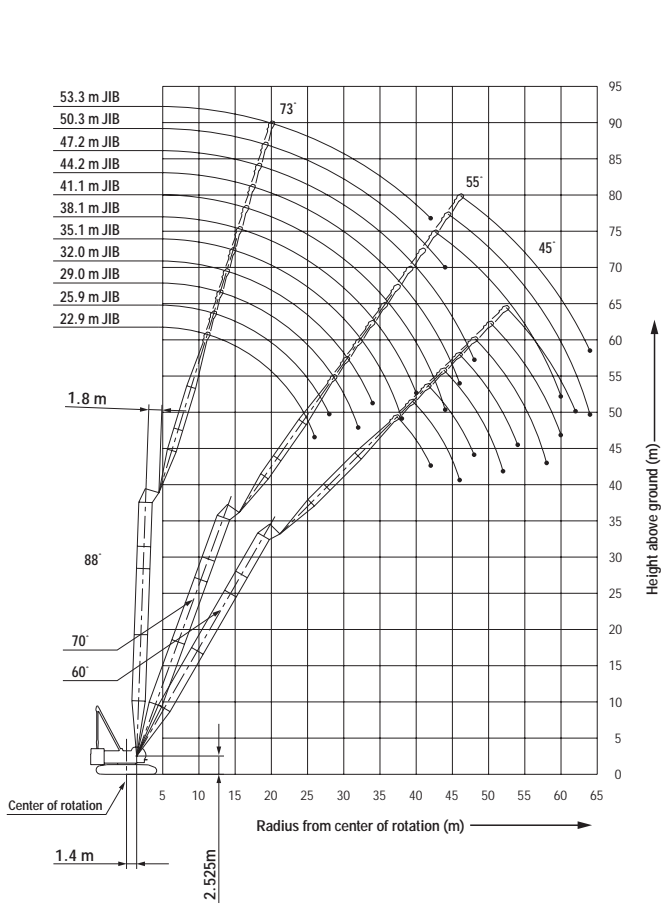
A = 4.3 m (14'), B = 3.0 m (10'), C = 6.1 m (20'), D = 9.1 m (30')

WORKING RADIUS

LUFFING JIB (Boom Angle: 48.6 m Boom)

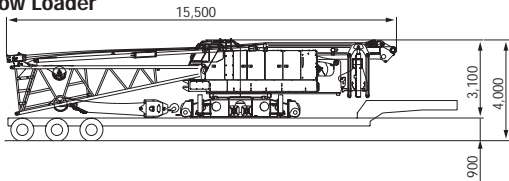
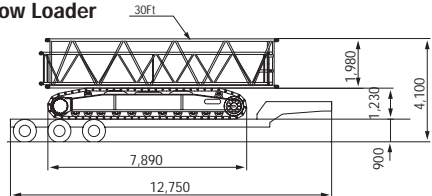
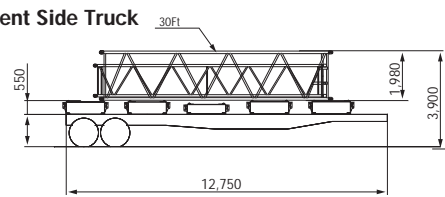
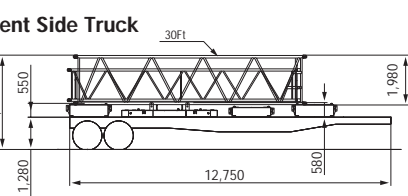
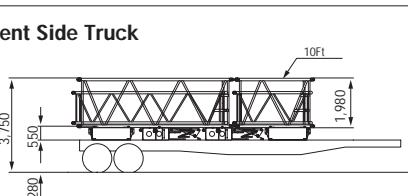
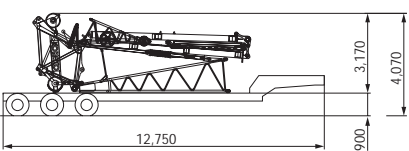
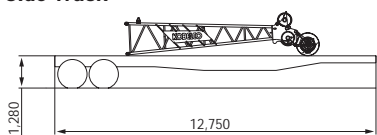


LUFFING JIB (Boom Angle: 36.5 m Boom)



TRANSPORTATION PLAN

(Main Boom 48.6 m + Luffing Jib 53.3 m)

Configuration	Description	Total Weight
No.1 Low Loader 	Base Machine with self removal device =	41.0 ton
No.2 Low Loader 	Crawler (2 x 14.5 ton) = 9.1 m Main Boom Insert = 9.1 m Luffing Jib Insert = Total	29.0 ton 1.16 ton 0.74 ton <hr/> 30.9 ton
No.3 Tent Side Truck 	9.1 m Main Boom Insert = 9.1 m Luffing Jib Insert = Counterweight (4 x 5.0 ton) = Counterweight = Total	1.16 ton 0.74 ton 20.0 ton 1.5 ton <hr/> 23.4 ton
No.4 Tent Side Truck 	9.1 m Main Boom Insert = 9.1 m Luffing Jib Insert = Counterweight (2 x 5.0 ton) = Counterweight = Counterweight = Total	1.16 ton 0.74 ton 10.0 ton 8.0 ton 1.5 ton <hr/> 21.4 ton
No.5 Tent Side Truck 	6.1 m Main Boom Insert = 6.1 m Luffing Jib Insert = Carbodyweight (2 x 5.0 ton) = Counterweight (2 x 2.5 ton) = 3.0 m Main Boom Insert = 3.0 m Luffing Jib Insert = Total	0.81 ton 0.47 ton 10.0 ton 5.0 ton 0.53 ton 0.31 ton <hr/> 17.12 ton
No.6 Low Loader 	Lower Jib Assembly and Tower Cap =	5.0 ton
No.7 Tent Side Truck 	Luffing Jib Tip =	1.2 ton

Note: This transport plan depends on your specification of trailer and the areas or countries where you transport.

Note: Due to our policy of continual product improvements all designs and specifications are subject to change without advance notice.



KOBELCO CRANES CO., LTD.

17-1, Higashi-Gotanda 2-chome, Shinagawa-ku, TOKYO, 141-8626 JAPAN

Tel: ++81 (0) 3-5789-2130 Fax: ++81 (0) 3-5789-3372