

# HYDRAULIC CRAWLER CRANE

# KOBELCO

# CKE2000

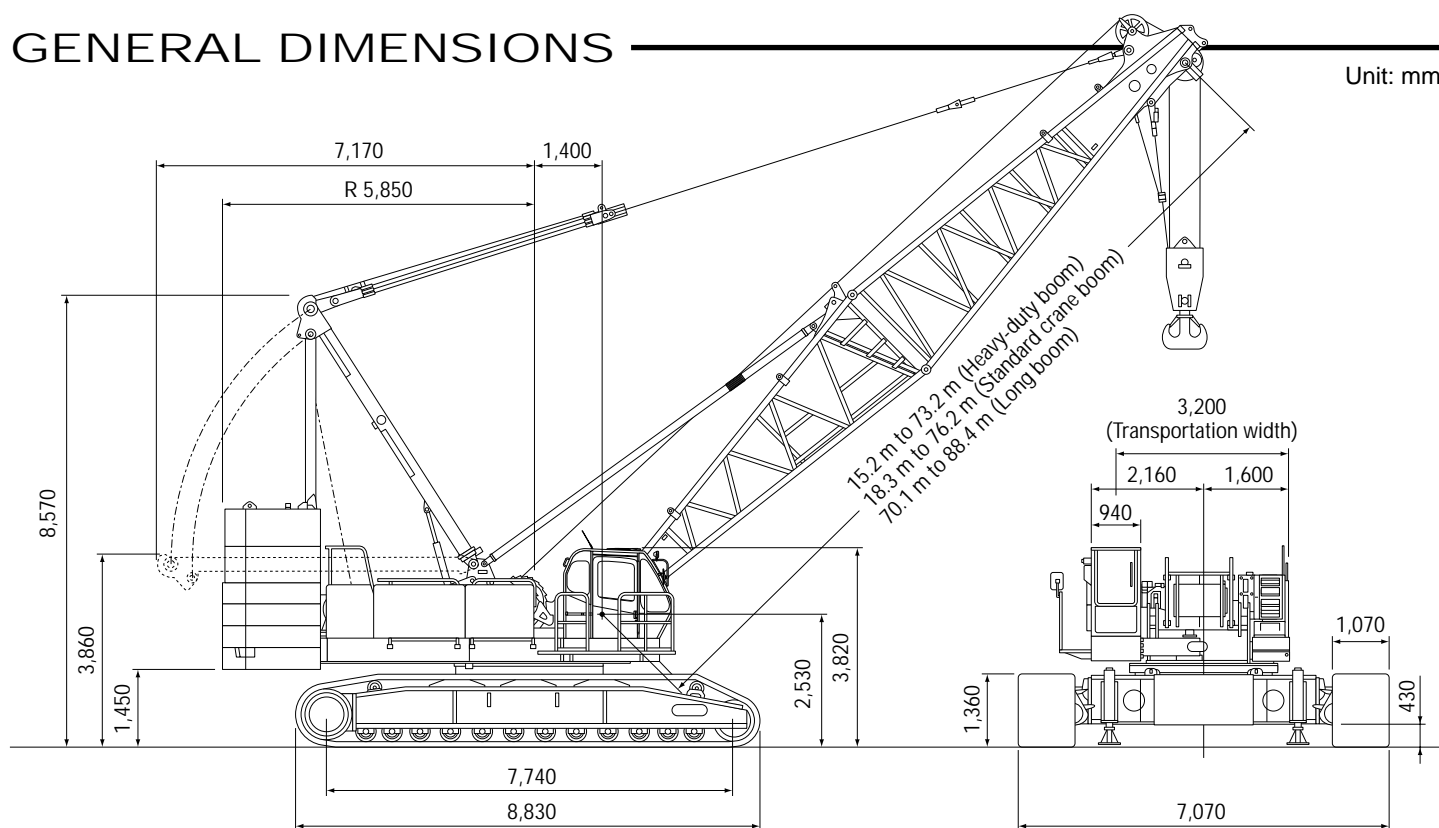
**Max. Lifting Capacity: 200 t**  
**Max. Boom Length: 88.4 m**  
**Max. Fixed Jib Combination: 73.2 + 30.5 m**  
**Max. Luffing Jib Combination: 58.0 + 48.8 m**

## S P E C I F I C A T I O N S

Heavy-duty Boom	
Max. Lifting Capacity	200 t/5.0 m (Heavy Boom)
Max. Length	73.2 m
Standard Crane Boom	
Max. Lifting Capacity	150 t/6.5 m
Max. Length	76.2 m
Fixed Jib	
Max. Lifting Capacity	20.5 t / 13.0 m
Max. Combination	73.2 m + 30.5 m
Long Boom	
Max. Length	88.4 m
Luffing Jib	
Max. Combination	58.0 m + 48.8 m
Main & Aux. Winch	
Max. Line Speed	110 m/min (1st layer)
Rated Line Pull	132 kN (13.5 tf)
Max. Line Pull	245 kN (25 tf)
Wire Rope	28 mm
Wire Rope Length	370 m (Main) 210 m (Aux.)
Brake Type	Wet-type multiple disc brake
Free-Fall	Option

Working Speed	
Swing Speed	2.1 min <sup>-1</sup> (rpm)
Travel Speed	1.1/0.7 km/h
Power Plant	
Model	Mitsubishi 6D24-TLU2D
Engine Output	235 kW/2,000 min <sup>-1</sup> (rpm)
Fuel Tank Capacity	400 liters
Hydraulic System	
Main Pumps	4 variable displacement
Max. Pressure	30.9 MPa (315 kgf/cm <sup>2</sup> )
Hydraulic Tank Capacity	550 liters
Weight	
Operating Weight	Approx. 197.0 t
Counterweight	82.2 t (upper), 20.0 t (lower)
Transport Weight	35.9 t (Main machine and carbody)
Ground Pressure	110 kPa (1.12 kgf/cm <sup>2</sup> )

## GENERAL DIMENSIONS



**KOBELCO CRANES CO., LTD.**



# BOOM ARRANGEMENT

## BOOM ARRANGEMENT CHART

### HEAVY-DUTY BOOM

Boom length m (ft)	Boom arrangement
15.2 (50)	Base-Tip
18.3 (60)	Base-A-Tip
21.3 (70)	Base-A-A-Tip
24.4 (80)	Base-A-B-Tip
27.4 (90)	Base-A-A-B-Tip
30.5 (100)	Base-A-B-B-Tip
33.5 (110)	Base-A-B-C-Tip
36.6 (120)	Base-A-A-B-C-Tip
39.6 (130)	Base-A-B-B-C-Tip
42.7 (140)	Base-A-B-C-C-Tip
45.7 (150)	Base-A-A-B-C-C-Tip
48.8 (160)	Base-A-B-B-C-C-Tip
51.8 (170)	Base-A-B-C-C-C-Tip
54.9 (180)	Base-A-A-B-C-C-C-Tip
57.9 (190)	Base-A-B-B-C-C-C-Tip
61.0 (200)	Base-A-B-C-C-C-C-Tip
64.0 (210)	Base-A-A-B-C-C-C-C-Tip
67.1 (220)	Base-A-B-B-C-C-C-C-Tip
70.1 (230)	Base-A-B-C-C-C-C-C-Tip
73.2 (240)	Base-A-A-B-C-C-C-C-C-Tip, Base-C'-A-A-B-C-C-C-C-Tip

### STANDARD CRANE BOOM

Boom length m (ft)	Boom arrangement
18.3 (60)	Base-T-Tip(Li)
21.3 (70)	Base-A-T-Tip(Li)
24.4 (80)	Base-A-A-T-Tip(Li)
27.4 (90)	Base-A-B-T-Tip(Li)
30.5 (100)	Base-A-A-B-T-Tip(Li)
33.5 (110)	Base-A-B-B-T-Tip(Li)
36.6 (120)	Base-A-B-C-T-Tip(Li)
39.6 (130)	Base-A-A-B-C-T-Tip(Li)
42.7 (140)	Base-A-B-B-C-T-Tip(Li)
45.7 (150)	Base-A-B-C-C-T-Tip(Li)
48.8 (160)	Base-A-A-B-C-C-T-Tip(Li)
51.8 (170)	Base-A-B-B-C-C-T-Tip(Li)
54.9 (180)	Base-A-B-C-C-C-T-Tip(Li)
57.9 (190)	Base-A-A-B-C-C-C-T-Tip(Li)
61.0 (200)	Base-A-B-B-C-C-C-T-Tip(Li)
64.0 (210)	Base-A-B-C-C-C-C-T-Tip(Li)
67.1 (220)	Base-A-A-B-C-C-C-C-T-Tip(Li)
70.1 (230)	Base-A-B-B-C-C-C-C-T-Tip(Li)
73.2 (240)	Base-A-B-C-C-C-C-C-T-Tip(Li)
76.2 (250)	Base-A-A-B-C-C-C-C-C-T-Tip(Li), Base-C'-A-A-B-C-C-C-C-T-Tip(Li)

### LONG BOOM ARRANGEMENT CHART

Boom length m (ft)	Boom arrangement
70.1 (230)	Base-A-B-C-C-C-C-T-D-Tip(Lg)
73.2 (240)	Base-A-A-B-C-C-C-C-T-D-Tip(Lg)
76.2 (250)	Base-A-A-B-C-C-C-C-T-D-E-Tip(Lg)
79.2 (260)	Base-A-A-B-C-C-C-C-T-D-F-Tip(Lg)
82.3 (270)	Base-A-A-B-C-C-C-C-T-D-E-F-Tip(Lg)
85.3 (280)	Base-A-A-B-C-C-C-C-T-D-E-G-Tip(Lg)
88.4 (290)	Base-A-A-B-C-C-C-C-T-D-F-G-Tip(Lg), Base-C'-B-B-C-C-C-C-T-D-F-G-Tip(Lg)

**Note:**  
 Base Boom Length and Boom Tip Length:  
 Base = 7.6 m (25')  
 Tip = 7.6 m (25'), Tip(Li) = 5.2 m (17'), Tip(Lg) = 8.3 m (28')  
 Insert Boom:  
 A = 3.0 m (10'), B = 6.1 m (20'), C = 9.1 m (30')  
 C' = 9.1 m (30') : Insert boom for tower, with guide sheave  
 T = 5.4 m (18') : Insert tapered boom  
 D = 3.0 m (10') : mid-point boom  
 E = 3.0 m (10'), F = 6.0 m (20'), G = 9.0 m (30')  
 \*E, F and G: combined use with insert jib for tower

# TOWER & JIB ARRANGEMENT

## TOWER ARRANGEMENT CHART

Boom length m (ft)	Boom arrangement
36.6 (120)	Base-C'-C-C-Cap
39.7 (130)	Base-C'-A-C-C-Cap
42.7 (140)	Base-C'-A-C-C-A-Cap
45.8 (150)	Base-C'-A-B-C-C-Cap
48.8 (160)	Base-C'-A-A-B-C-C-Cap
51.9 (170)	Base-C'-A-B-C-B-C-Cap
54.9 (180)	Base-C'-A-B-C-C-C-Cap
58.0 (190)	Base-C'-A-A-B-C-C-C-Cap

**Note:** Base Boom Length and Tower Cap Length:  
 Base = 6.1 m (20'), Cap = 1.6 m (5')  
 Insert Tower:  
 A = 3.0 m (10'), B = 6.1 m (20'), C = 9.1 m (30')  
 C' = 9.1 m (30') : Insert tower jib, with guide sheave

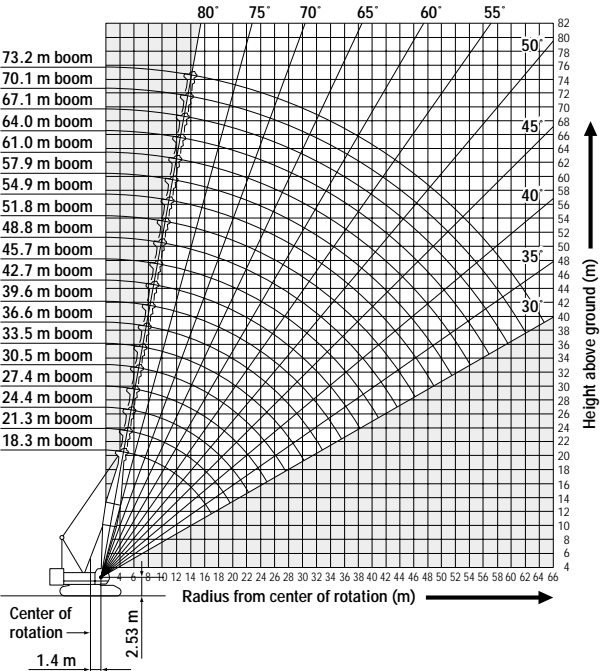
## JIB ARRANGEMENT CHART

Jib length m (ft)	Tower jib arrangement
27.4 (90)	Base-D-F-Tip(Lg)
33.5 (110)	Base-D-E-E-F-Tip(Lg)
36.6 (120)	Base-D-E-F-F-Tip(Lg)
39.6 (130)	Base-D-E-F-G-Tip(Lg)
42.7 (140)	Base-D-E-E-F-G-Tip(Lg)
45.7 (150)	Base-D-E-F-F-G-Tip(Lg)
48.8 (160)	Base-D-E-F-G-G-Tip(Lg)

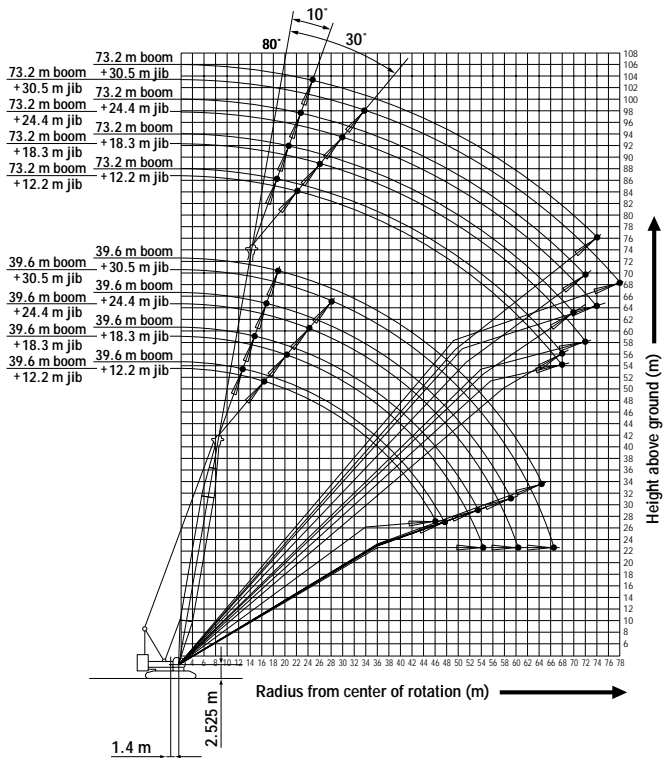
**Note:** Base Jib Length and Jib Tip Length:  
 Base = 10.0 m (33'), Tip(Lg) = 8.3 m (28')  
 Insert jib:  
 D = 3.0 m (10') : mid-point boom,  
 E = 3.0 m (10'), F = 6.0 m (20'), G = 9.0 m (30')

# WORKING RADIUS

## CRANE BOOM



## FIXED JIB (Jib Offset Angle: 10°+ 30°)

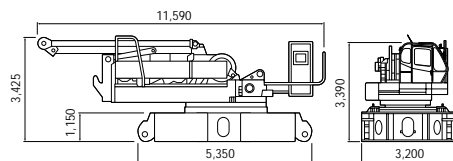


# SPECIFICATIONS OF PARTS AND ATTACHMENTS

Dimensions: mm Weight: kg

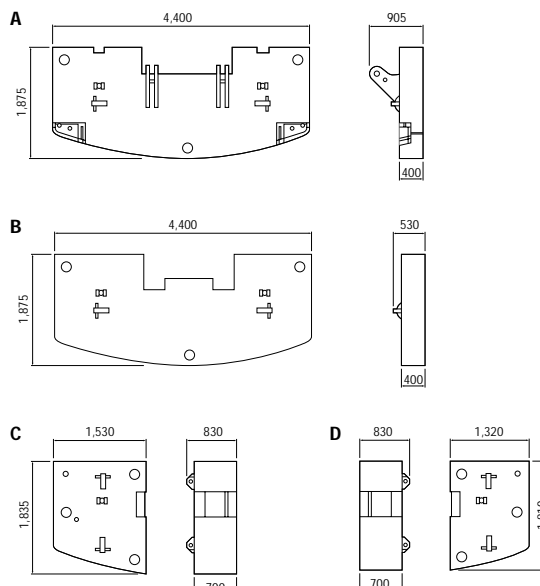
## Base Machine and Carbody

weight: 35,900 kg



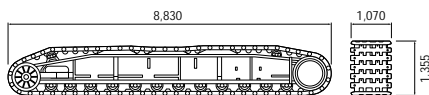
## Counterweights

Total weight: 82,200 kg (A 13,500 kg + B 12,500 kg x 3 + C 8,400 kg x 2 + D 7,200 kg x 2)



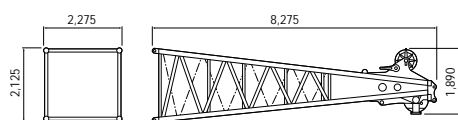
## Crawlers

weight: 23,600 kg



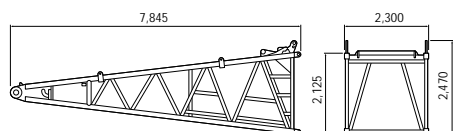
## Heavy-duty Upper Boom

weight: 3,000 kg



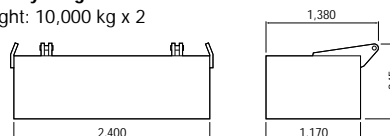
## Lower Boom

weight: 2,430 kg



## Carbody weight

weight: 10,000 kg x 2



# OTHER ATTACHMENTS

Attachment	Weight	Dimensions (L x W x H)
3.0 m (10 ft) Insert Boom	610 kg	3,175 mm x 2,275 mm x 2,125 mm
6.1 m (20 ft) Insert Boom	1,030 kg	6,225 mm x 2,275 mm x 2,125 mm
9.1 m (30 ft) Insert Boom	1,450 kg	9,270 mm x 2,275 mm x 2,125 mm
9.1 m insert tower	1,750 kg	9,270 mm x 2,275 mm x 2,125 mm
Light-duty boom tip	2,100 kg	5,725 mm x 1,525 mm x 1,525 mm
5.4 (18 ft) m insert tapered boom	840 kg	5,570 mm x 2,275 mm x 2,125 mm
Upper tower jib tip (Long boom tip)	990 kg	8,810 mm x 1,505 mm x 1,515 mm
Tower cap	2,100 kg	5,545 mm x 2,340 mm x 2,295 mm
Tower jib base	1,600 kg	10,380 mm x 2,335 mm x 1,525 mm
3.0 (10 ft) mid-point jib	320 kg	3,150 mm x 1,510 mm x 1,510 mm
3.0 m (10 ft) insert tower jib	320 kg	3,150 mm x 1,510 mm x 1,510 mm
6.1 m (20 ft) insert tower jib	535 kg	6,210 mm x 1,510 mm x 1,510 mm
9.1 m (30 ft) insert tower jib	755 kg	9,260 mm x 1,510 mm x 1,510 mm
Gantry	2,500 kg	6,110 mm x 1,760 mm x 820 mm
Tower strut	2,050 kg	7,410 mm x 2,380 mm x 1,125 mm
Upper spreader	635 kg	885 mm x 2,350 mm x 335 mm
Lower spreader	440 kg	855 mm x 1,500 mm x 320 mm
Upper spreader for tower jib	260 kg	1,020 mm x 245 mm x 765 mm
Lower spreader for tower jib	460 kg	2,275 mm x 690 mm x 835 mm
200-ton hook block	2,800 kg	700 mm x 995 mm x 2,225 mm
150-ton hook block	2,300 kg	700 mm x 715 mm x 2,665 mm
100-ton hook block	1,800 kg	700 mm x 555 mm x 2,025 mm
65-ton hook block	1,200 kg	700 mm x 385 mm x 1,815 mm
35-ton hook block	900 kg	700 mm x 365 mm x 1,575 mm
13.5-ton ball-hook	450 kg	1,200 mm x 380 mm dia.

Note: Due to our policy of continual product improvements all designs and specifications are subject to change without advance notice.



## KOBELCO CRANES CO., LTD.

17-1, Higashigotanda 2-chome, Shinagawa-ku, Tokyo 141-8626 JAPAN

Tel: ++81 (0) 3-5789-2130 Fax: ++81 (0) 3-5789-3372

Bulletin No. CKE2000-S401

04031000 Printed in Japan