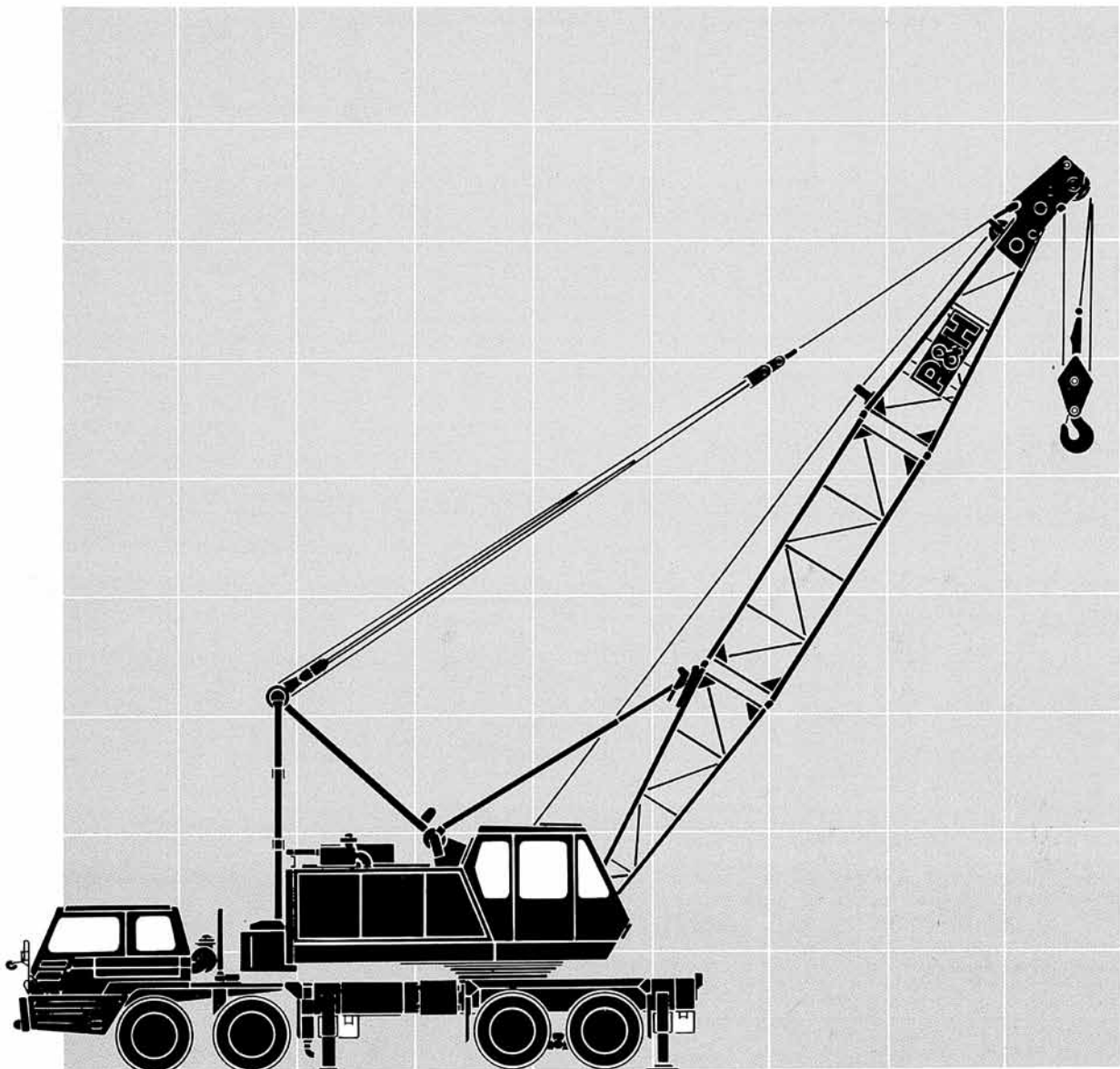


P&H  **KOBELCO**

9035-TC

Hybrid-drive Truck Crane



Bulliten No. 9035-101

Truck Crane

Rated lifting load—main boom—360° swing (metric ton)

Operating Radius in Meters	With outriggers fully extended															Operating Radius in Meters	
	9.14m (30') Boom	12.19m (40') Boom	15.24m (50') Boom	18.29m (60') Boom	21.34m (70') Boom	24.38m (80') Boom	27.43m (90') Boom	30.48m (100') Boom	33.53m (110') Boom	36.58m (120') Boom	39.62m (130') Boom	42.67m (140') Boom	45.72m (150') Boom	48.77m (160') Boom	51.82m (170') Boom		
3.7	35.00																3.7
4.0	32.95	32.50															4.0
5.0	26.20	26.20	26.00														5.0
6.0	21.75	21.70	21.55	21.40	21.30												6.0
7.0	18.40	18.30	18.20	18.00	17.95	17.80											7.0
8.0	15.75	15.65	15.60	15.20	15.10	14.90	14.75	14.30									8.0
9.0	13.60	13.55	13.55	13.10	12.90	12.75	12.55	12.55	12.40	12.30							9.0
10.0		11.85	11.85	11.45	11.25	11.05	10.85	10.80	10.70	10.60	10.50						10.0
11.0		10.40	10.40	10.10	9.90	9.75	9.55	9.50	9.40	9.25	9.15	9.10	8.80				11.0
12.0		9.20	9.20	9.00	8.80	8.65	8.45	8.40	8.30	8.15	8.10	8.00	7.95	7.00	5.90		12.0
14.0			7.30	7.30	7.10	7.00	6.85	6.80	6.70	6.55	6.45	6.35	6.30	5.95	5.20		14.0
16.0				6.05	5.90	5.75	5.65	5.65	5.55	5.40	5.30	5.20	5.00	4.90	4.55		16.0
18.0				5.10	4.95	4.85	4.80	4.75	4.65	4.50	4.40	4.30	4.10	4.05	3.90		18.0
20.0					4.20	4.10	4.10	4.05	3.95	3.80	3.70	3.60	3.40	3.35	3.20		20.0
22.0						3.50	3.50	3.40	3.30	3.25	3.15	3.05	2.85	2.80	2.70		22.0
24.0							3.10	3.00	2.95	2.80	2.70	2.60	2.40	2.40	2.25		24.0
26.0							2.70	2.65	2.60	2.45	2.35	2.25	2.05	2.00	1.90		26.0
28.0								2.30	2.25	2.10	2.00	1.90	1.75	1.70	1.60		28.0
30.0									2.00	1.85	1.75	1.65	1.50	1.45	1.35		30.0
32.0										1.60	1.50	1.40	1.30	1.20	1.10		32.0
34.0											1.30	1.20	1.10	1.00	0.90		34.0

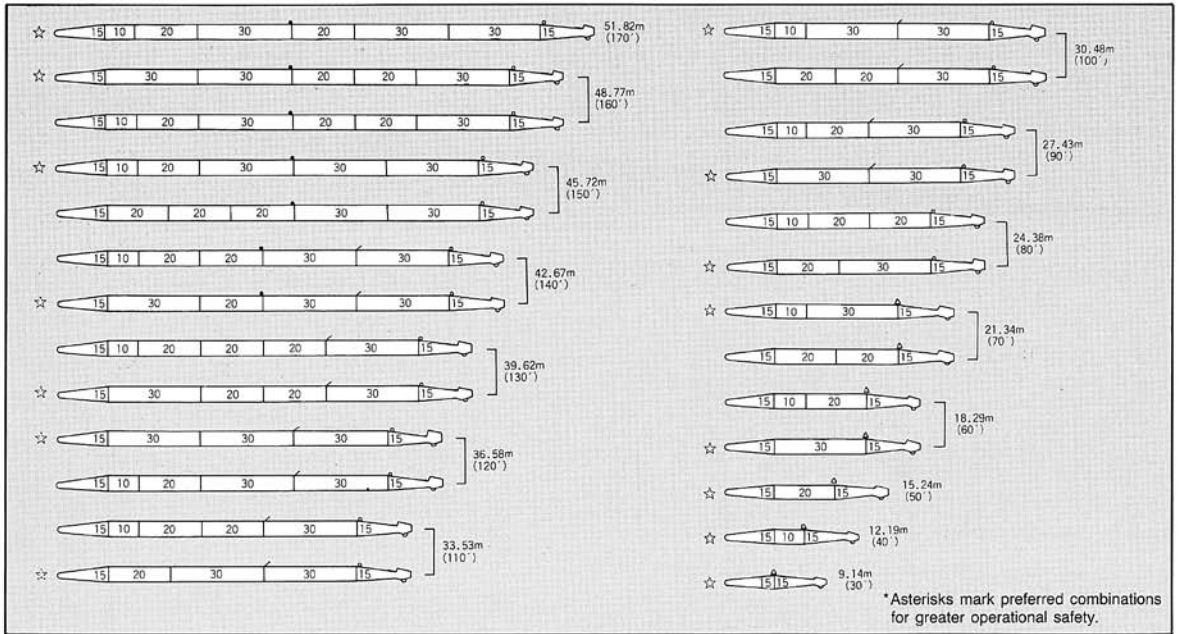
Rated lifting load—main boom and 30° offset jib—360° swing (metric ton)

Operating Radius in Meters	With outriggers fully extended															Operating Radius in Meters											
	27.43m (90') Boom				30.48m (100') Boom				33.53m (110') Boom				36.58m (120') Boom				39.62m (130') Boom				42.67m (140') Boom						
	6.10 (20') Jib	9.14 (30') Jib	12.19 (40') Jib	15.24 (50') Jib	6.10 (20') Jib	9.14 (30') Jib	12.19 (40') Jib	15.24 (50') Jib	6.10 (20') Jib	9.14 (30') Jib	12.19 (40') Jib	15.24 (50') Jib	6.10 (20') Jib	9.14 (30') Jib	12.19 (40') Jib		15.24 (50') Jib	6.10 (20') Jib	9.14 (30') Jib	12.19 (40') Jib	15.24 (50') Jib	6.10 (20') Jib	9.14 (30') Jib	12.19 (40') Jib	15.24 (50') Jib		
10	4.50																									10	
11	4.50				4.50				4.50																	11	
12	4.50	4.10			4.50	4.10			4.50				4.50				4.50									12	
14	4.50	4.10	3.20		4.50	4.10	3.20		4.50	4.10			4.50	4.10			4.50	4.10			4.50	4.10			4.50	4.10	14
16	4.50	4.10	3.20	2.27	4.50	4.10	3.20	2.27	4.50	4.10	3.20	2.27	4.50	4.10	3.20	2.27	4.50	4.10	3.20	2.27	4.50	4.10	3.20	2.27	4.50	4.10	16
18	4.50	4.10	3.20	2.27	4.50	4.10	3.20	2.27	4.50	4.10	3.20	2.27	4.50	4.10	3.20	2.27	4.40	4.10	3.20	2.27	4.30	4.10	3.20	2.27	4.30	4.10	18
20	4.10	4.10	3.20	2.27	4.05	4.05	3.20	2.27	3.95	3.95	3.20	2.27	3.80	3.80	3.20	2.27	3.70	3.70	3.20	2.27	3.60	3.60	3.20	2.27	3.60	3.60	20
22	3.50	3.50	3.20	2.27	3.50	3.50	3.20	2.27	3.40	3.40	3.20	2.27	3.25	3.25	3.20	2.27	3.15	3.15	3.15	2.27	3.05	3.05	3.05	2.27	3.05	3.05	22
24	3.10	3.10	3.10	2.27	3.00	3.00	3.00	2.27	2.95	2.95	2.95	2.27	2.80	2.80	2.80	2.27	2.70	2.70	2.70	2.27	2.60	2.60	2.60	2.27	2.60	2.60	24
26	2.70	2.70	2.70	2.27	2.65	2.65	2.65	2.27	2.60	2.60	2.60	2.27	2.45	2.45	2.45	2.27	2.35	2.35	2.35	2.27	2.25	2.25	2.25	2.25	2.25	2.25	26
28					2.30	2.30	2.30	2.27	2.25	2.25	2.25	2.25	2.10	2.10	2.10	2.10	2.00	2.00	2.00	2.00	1.90	1.90	1.90	1.90	1.90	1.90	28
30									2.00	2.00	2.00	2.00	1.85	1.85	1.85	1.85	1.75	1.75	1.75	1.75	1.65	1.65	1.65	1.65	1.65	1.65	30
32													1.60	1.60	1.60	1.60	1.50	1.50	1.50	1.50	1.40	1.40	1.40	1.40	1.40	1.40	32
34																	1.30	1.30	1.30	1.30	1.20	1.20	1.20	1.20	1.20	1.20	34

- Notes: 1. Operating radius is the horizontal distance from the axis of rotation to a vertical line through the center of gravity of the load.
2. Ratings do not exceed 78% of the tipping load; deduct the weights of hook block(s), slings and all other load handling accessories from ratings shown.
3. Ratings shown are based on freely suspended loads and make no allowance for such factors as wind effect on the lifted load, out-of-level ground conditions, operating speeds or any other condition that could be detrimental to the safe operation of this equipment. The operator, therefore, has the responsibility to judge the prevailing conditions and reduce lifted loads and operating speeds accordingly.
4. Operation is not intended or approved in the ranges indicated by blank spaces in the chart.
5. Ratings given are with the gentry erected to its maximum, and boom inserts and guy cables arranged according to the Owner's and Operator's Manual.
6. When only the boom is fitted, deduct the following weights from the rated lifting load to obtain the liftable load:
main hook + wire rope slings + all other load handling accessories.

7. When the jib is fitted, deduct the following weights from the rated lifting load to obtain the liftable load:
main hook + jib hook + wire rope slings + all other load handling accessories.
8. When the jib is fitted, but the auxiliary sheave is rigged for boom-end lifting, the boom lifting capacity must be calculated by deducting the following weights according to the jib length from ratings shown.
Auxiliary sheave 200kg 6.10m jib 800kg
9.14m jib 900kg 12.19m jib 1000kg
15.24m jib 1100kg
- Liftable loads must be calculated by deducting the weight of the main and auxiliary hook blocks, slings and all other load handling accessories from the ratings shown.
9. The jib can only be used with main boom lengths between 27.43m and 42.67m.
10. Auxiliary sheave capacity.
Main boom length, m (ft) 9.14 (30)—48.77 (160)
Max. rated crane load (ton) 4.50
11. Boom back stop is required for all boom lengths.

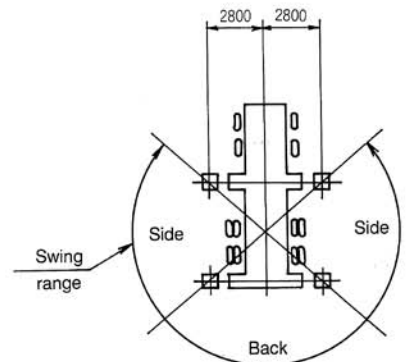
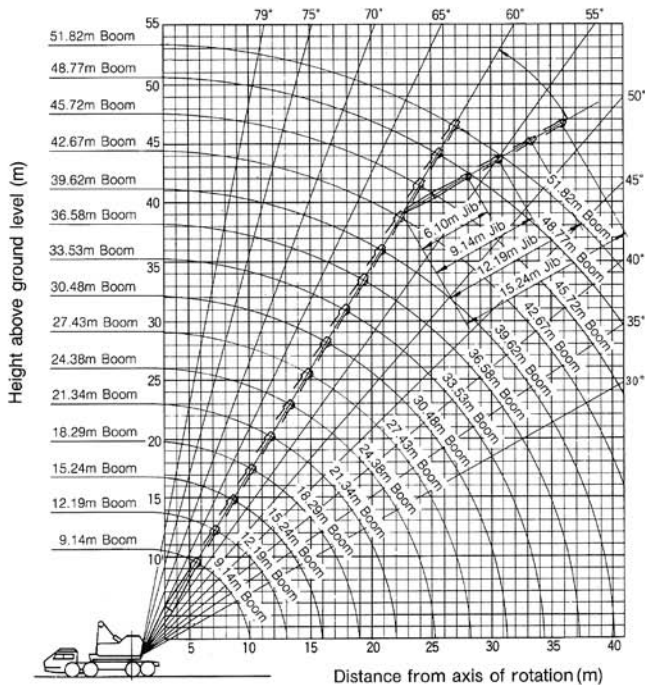
Boom modular build up



Rated lifting load per hoisting rope and hook weight

Hook capacity (ton)	Maximum rated load (ton)							Hook weight (ton)
	1 rope	2 ropes	3 ropes	4 ropes	5 ropes	6 ropes	7 ropes	
35	5	10	15	20	25	30	35	0.30
15	5	10	15					0.25
5	5							0.12

Working range



Clamshell Attachment

■ Specifications

● Performance		
Max. lifting capacity	ton × m	4.5 × 16
Max. boom length	m	18.29
Max. boom hoisting line speed*	m/min	48
Max. boom lowering line speed*	m/min	26
Max. holding line speed (hoisting)*	m/min	48
Max. closing line speed (hoisting)*	m/min	48
Max. swing speed	rpm	3.3
Operating weight	ton	39 (standard boom with 0.8m ³ bucket)
● Wire ropes		
Wire rope dia. for boom hoisting	mm	14
Wire rope dia. for holding	mm	20
Wire rope dia. for closing	mm	20
Boom guy line dia.	mm	28

*Operating speed figures are for one layer.

■ Rated clamshell load (metric ton)

Operating radius (m)	Boom length (m)			
	9.14	12.19	15.24	18.29
6	4.5	4.5		
7	4.5	4.5	4.5	
8	4.5	4.5	4.5	4.5
10			4.5	4.5
12				4.5
14				4.5
16				4.5

■ Buckets

Capacity (m ³)	Bucket weight (metric ton)	Use
0.6	1.6	digging
0.8	2.1	digging
1.2	2.1	gravel loading
2.0	1.8	coal loading

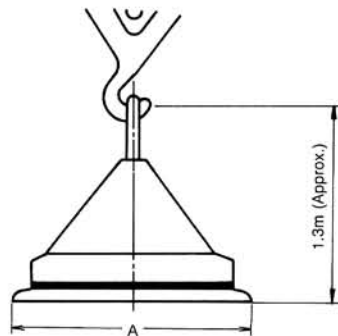
- Notes: 1. Operating radius is the horizontal distance from the axis of rotation to the center of the bucket.
 2. Ratings must not be exceeded, and loads include the weight of any bucket in use as well as its contents.
 3. To lift rated loads, outriggers must be fully extended and set.

Lifting Magnet Attachment

■ Specifications

Item	Model	9035TC
Magnet type		130H-150H
Max. rated load (metric ton)		4.5
Max. boom length (m)		18.29

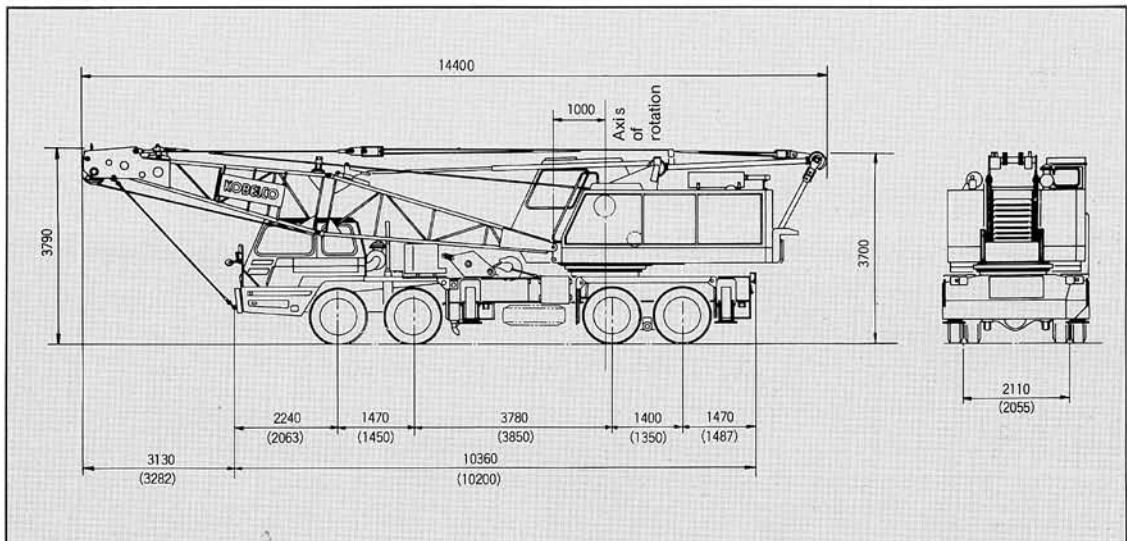
*Operating with a lifting magnet larger than 150H voids the warranty.



(A) (mm)	Self-weight (kg)
1,300 φ	2,050
1,500 φ	2,700

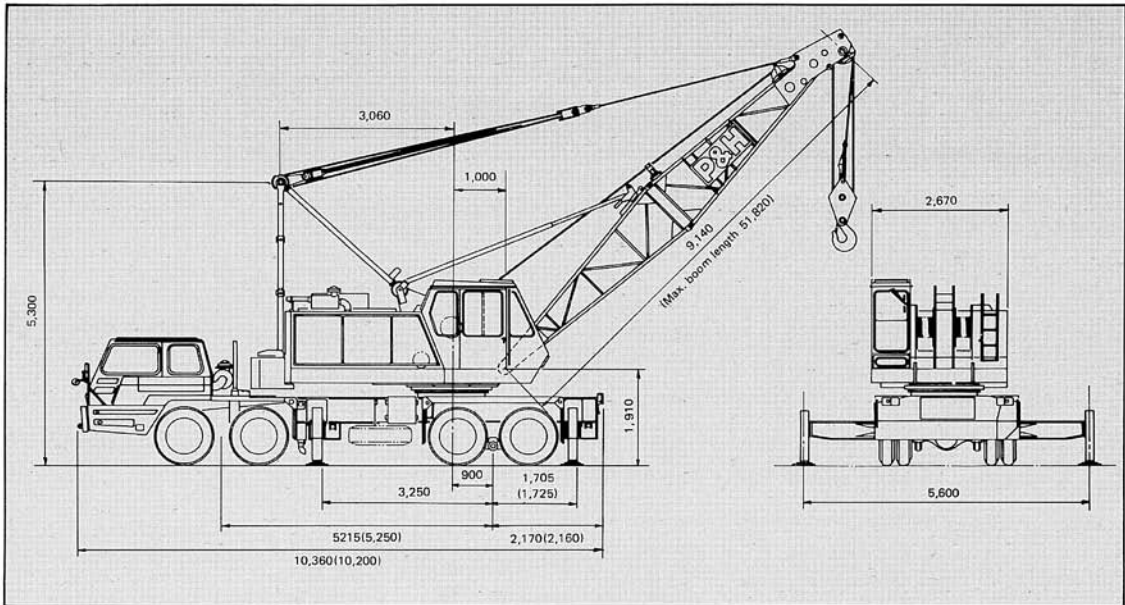
Transportation Dimensions

Unit: mm



Principal Dimensions

Unit: mm



Specifications

● Performance			
Max. lifting capacity	ton × m	35 × 3.7	
Min. boom length	m	9.14	
Max. boom length	m	51.82	
Max. jib length	m	15.24	
Max. boom length with jib	m	42.67 (boom) + 15.24 (jib)	
Main hook hoisting speed (high/low)*	m/min	48/34	
Main hook lowering line speed using power (high/low)*	m/min	31/22	
Boom hoisting line speed (high/low)*	m/min	48/34	
Boom lowering line speed (high/low)*	m/min	26/18	
Aux. hook hoisting line speed (high/low)*	m/min	48/34	
Aux. hook lowering line speed using power (high/low)*	m/min	31/22	
Swing speed	rpm	3.3	
● Weights			
Operating weight (approx.)	ton	37 (with counter weight, 9.14m boom and 35ton hook block)	
Carrier weight (approx.)	ton	37 (with counter weight, 9.14m boom and 35ton hook block)	
● Wire ropes			
Main hoisting rope dia.	mm	20	
Boom hoisting rope dia.	mm	14	
Aux. hoisting rope dia.	mm	20	
Boom guy line dia.	mm	28	
Jib guy line dia.	mm	18	
● Crane drive			
Engine	Model	Nissan PD604 diesel engine	
	Type	4-stroke, water-cooled with direct injection	
	Power output	PS/rpm	130/1800
Transmission	Power shift, 2-speed transmission and PTO for hydraulic pump drive		
● Carrier			
Model	Nissan P-KG 52T with hydraulic outriggers		
Travel speed	km/h	65	
Gradeability	tanθ	0.29	
Min. turning radius	m	11.8	
Engine	Model	Nissan PE8 diesel engine	
	Type	4-stroke, water-cooled V 8-cylinder with direct injection	
	Max. output	PS/rpm	315/2,300
Outriggers	Out and down type		

*Operating speed figures are for one layer.

P&H **KOBELCO**
9035-TC

NOTE: Due to our policy of continual product improvement, all designs and specifications are subject to change without advance notice. Data herein is informational in nature and shall not be construed to warrant suitability of the machine for any particular purpose as performance may vary with the conditions encountered. These statements are correct at time of going to press.

 **KOBE STEEL, LTD.**

CONSTRUCTION MACHINERY DIVISION

Tokyo Head Office:

Tekko Bldg.

No. 8-2, Marunouchi 1-chome, Chiyoda-ku, Tokyo, Japan

Phone: Tokyo (03) 281-7881

Cable: "KOBESTEEL TOKYO"

Telex: No. 222-3601 (KOBESTEEL TOK)

Construction Machinery Plant:

123, Fukuda, Okubo-cho, Akashi-city, Japan

Phone: Akashi (078) 936-1331

Cable: "KOBESTEEL AKA"

Telex: No. 5628944 (KOBESTL J)

Address Inquiries to: