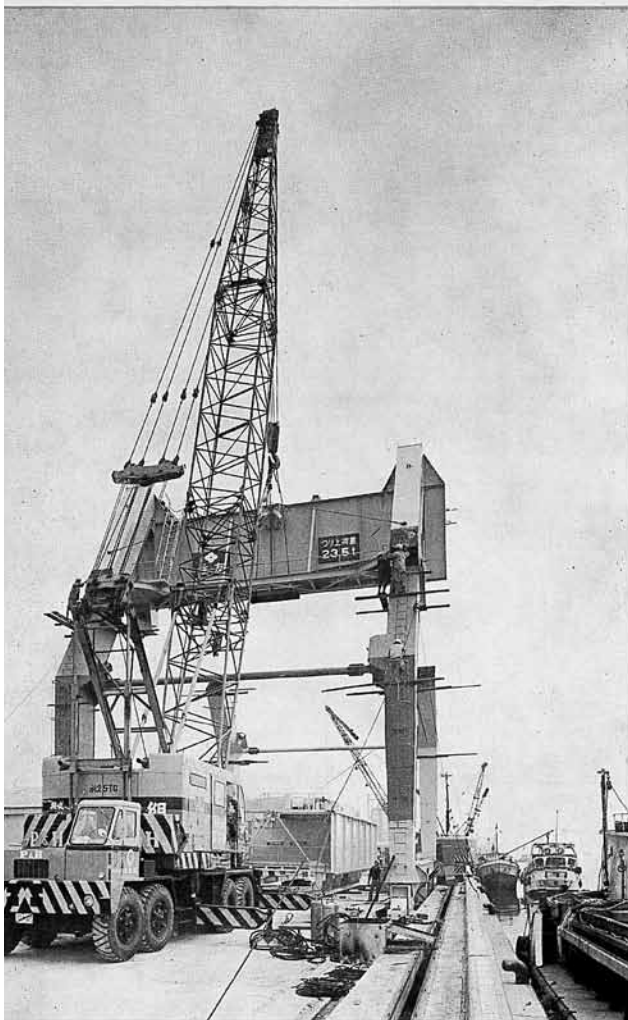


# P&H 9125-TC



**P&H 127 TON  
TRUCK CRANE...  
THE CHAMPION  
WEIGHT LIFTER  
with EXTRA SAFETY,  
STABILITY  
and RELIABILITY**

- **Exclusive P&H Magnetorque swing** provides silk-smooth swing motor requires no adjustments, practically eliminates maintenance of swing.
- **Exclusive P&H Power Box design** completely seals all gears, provide automatic lubrication from oil bath.
- **Kobe built P&H 8 x 4 carrier** perfectly matched to P&H upper for single source service responsibility for entire rig. Frame and outriggers are T-1 steel for greatest strength.
- **Double-drum independent precision planetary boom hoist** is fast, smooth and "Triple-Safe". Standard Equipment.

- **P&H full-flow power hydraulic controls** provide easy and precise load control. Adjustment free; full-safe load holding.
- **High tensile alloy steel tubular chord boom** furnished as standard, provides greater strength for longest booms without "load-robbing" weight.
- **20 speeds forward** with 4 in reverse increase between-job mobility, provide the right gear ratio for every situation.
- **Air brakes** on all 8 wheels and Maxi-brakes are standard on rear wheels for safe, fast and effective operation.
- **Hydraulic Outriggers**, standard.

Bulletin No. KP-9125-3



**KOBE STEEL, LTD.**

# BASIC MACHINE

## UPPER MACHINERY

### POWER:

**Diesel:** Cummins, V785-C265, 8 cyl., 221 P.S. @ 2400 rpm (torque converter drive) alternator and 24 volt starting system. (Standard)  
Mitsubishi 8DC60C, 8 cyl., 230 P.S. @ 2000 rpm (torque converter drive) alternator and 24 volt starting system. (Optional Extra)

**HOOR METER:** Standard (electrical).

**TORQUE CONVERTER:** 3 stage—with tail shaft governor, std.

**FUEL TANK:** Capacity.....416 l (110 gal.)

**THROTTLE:** Twist grip control mounted on swing lever (standard).

**CONTROLS:** Full flow power hydraulic.

**SWING UNITS:** Swing motion through two magnetor torque units.

**CLUTCHES:** Band type, internal expanding, separate clutch for each machine function.

**BRAKES:** (Front and rear drums)—band type external contracting—full wrap—with spring set fail safe device. (Front and rear planetary drums) band type full wrap—external contracting.

**BOOM HOIST ASSEMBLY:** Single internal expanding band type clutch with chain drive to boom hoist drum shaft with two drums. Automatic spring set brake and safety pawl on one drum. Planetary arrangement with external contracting brake band and latching pawl for lowering. Line speed (each drum).

Hoisting ..... 22.3 m/min (73.1 fpm)

Lowering ..... 15.1 m/min (49.5 fpm)

Boom hoist drum shaft mounted on anti-friction bearings.

**MAIN DRUMS:** Drums in tandem, mounted on anti-friction bearings (see separate sheets covering attachments for further details).

**THIRD DRUM:** Mounts on extension of front drum shaft, to the left of main drum. Does not interfere with any other machine function or front end attachment (optional extra).

**GANTRY:** High gantry (telescoping type) three positions power raise.

**COUNTERWEIGHT:** Two pieces, external (standard\*) ... 18,500 kg (40,700 lbs.)

Additional maximum counterweight (for max. capacity)†

(optional extra) ..... 9,700 kg (21,300 lbs.)

\*Removable using four hydraulic rams set in carrier frame (furnished as standard equipment).

†Removable with gantry and boom hoist.

**TYPE OF FASTENING TO LOWER:** Six adjustable hook rollers—one double front—two double rear.

**SWING ROLLERS:** 36 Rollers—Live roller circle.

**SWING GEAR:** Internal cut teeth 1,676 mm (66") P.D.

**ROTATING SPEEDS** ..... High idle 3.86 rpm

**SWING BRAKE:** External band type, spring set, hydraulic release.

## P&H 8 x 4 CARRIER

8 Wheels, 4 Wheel Drive, 12 Tires

**WEIGHT:** Including turret and hydraulic outriggers, with 14:00 x 24—20 PR. tires, jack floats, fuel ..... 31,500 kg (69,300 lbs.)  
(Does not include front bumper counterweight.)

**FRAME:** Front section 18"-58 lb. alloy steel channel. Rear section 21" deep box section of T-1 alloy steel crossbraced and reinforced—top deck plate T-1 alloy steel. Extreme rear end consisting of vertical cylinder frame brackets and outrigger housings pin connected and removable. Rear vertical cylinder frame brackets pin connected and removable. Front bumper ½" plate with holes for mounting front bumper counterweight.

**OUTRIGGER HOUSINGS:** Fabricated independent single boxes, alloy steel plate, beam roller, rear boxes pin connected and removable.

**OUTRIGGER BEAMS:** Full length fabricated reinforced box section of T-1 alloy steel, screw jack at ends of beam.

Extended position from center of carrier ..... 3.30 m (10'-10")

**HYDRAULIC OUTRIGGERS:** Total of 8 double acting hydraulic cylinders provide independent horizontal and vertical motion of each beam, solenoid valve controlled.

**POWER PLANT:** Cummins, NS-743-B320, 6 cyl. . . . 320 PS @ 2,100 rpm with 24 volt starter—24 volt alternator.

**RADIATOR:** Vertical flat tube and fin type core, thermostatic temperature control, cooling system capacity..... 45.8 l (48.4 qts.)

**FUEL TANK CAPACITY** ..... 284 l (75 gals.)

**CLUTCH:** Lipe-Rollway, 355 mm (14") double plate.

**TRANSMISSIONS:** Main transmission: Fuller, T0905F, 5 speeds forward plus reverse.

Auxiliary transmission: Spicer, 8341D, 4 speed.

**BRAKES—SERVICE:** Maxi-brakes on 4 rear wheels—shoe type—air on all 8 wheels—total lining area ..... 11.56 cm<sup>2</sup> (1,792 sq. in.)

Maxi-brakes—the Maxi-brake is a spring loaded safety brake for the rear wheels which is normally kept in the "off" position by the pressure in the air reservoir. If for any reason pressure drops, the brake applies automatically to stop the vehicle. It provides normal driver control through the foot treadle valve and also has a dash mounted valve manually controlled which can be used for emergency application in the event of air line failure to the brake chamber, and can be used as a parking brake.

**FRONT AXLES:** 18,200 kg (40,000 lbs.) tandem capacity.

**REAR AXLE UNIT:** Timken-Detroit Model PR400 planetary axle single reduction at axle center and planetary drive at wheel hubs to 4 sets of dual wheels, with interaxle differential.

**SUSPENSION:**

Front: Alloy steel semi-elliptic leaf type springs with two torsion bars.

Rear: Torque rods and underhanging bogie beams.

**STEERING GEAR:** Hydraulic booster assist.

**STEERING WHEEL:** 533 mm (21") dia.

**TIRES:** Twelve 14:00 x 24—20 PR, on and off highway type standard (with tube and flap and high temperature valve cores).

**CAB:** Steel—one man type—offset left side of engine—safety glass.

**LIGHTS:** Headlights, tail lights, stop lights, directional signal lights front and rear, license plate light, clearance lights on sides and truck cab, clearance lights also furnished on crane cab, reflectors on rear, headlights, license plate, front directionals and clearance lights recessed, rear directionals protected by metal guard, dome light in cab, low air pressure warning light, illuminated speedometer and gage cluster, two recessed weatherproof cable sockets for upper lighting in transit—24 volt lighting system.

**EQUIPMENT:** Front bumper, full fenders, skirts, running boards, hood, rigging compartments, leatherette cushion seat, two 12 volt batteries, horn, rear view mirrors, electrical windshield wiper, reserve air tank with hose extension and tire inflating valve, air controlled safety device to prevent movement of carrier until air pressure is sufficient to release Maxi-brakes, illuminated instrument panel with speedometer ammeter, oil pressure gage, fuel gage, water temperature indicator, low air pressure indicator light, engine tachometer, starter button, front and rear tow hooks, metal tool box 20 ton jack, lug wrench, and 4 aluminum outrigger floats.

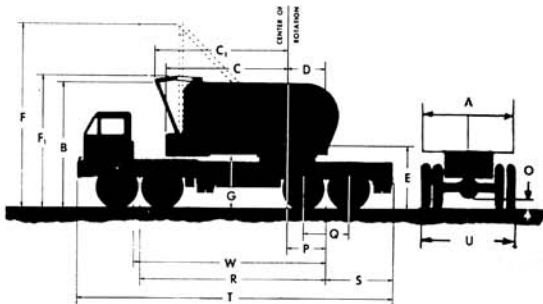
## PERFORMANCE

(Based on Cummins NS-743B-320 Diesel Engine)

CONDITION	SPEED RANGES	% GRADE
*On Highway.....	to 64.8 km/hr. (40.3 mph).....	to 13.5
†Off Highway .....	to 21.9 km/hr. (13.6 mph).....	to 25.6

\*Auxiliary transmission in high range.

†Auxiliary transmission in low range.



## GENERAL DIMENSIONS

A — Width of cab	3,300 mm (10'-10")
B — Height to top of cab	3,950 mm (12'-11 1/2")
C — Radius of rear end (counterweight)	4,480 mm (14'-8 1/2")
C1 — Radius of rear end (gantry lowered)	5,600 mm (18'-4")
D — Center of rotation to boom foot pin	1,320 mm (4'-4")
E — Height from ground to boom foot pin	2,220 mm (7'-3 1/2")
F — Clearance height over gantry (raised)	7,140 mm (23'-5")
F1 — Clearance height over standard gantry (lowered)	4,000 mm (13'-1")
G — Counterweight ground clearance	1,580 mm (5'-2 1/2")
O — Min. Ground clearance	300 mm (0'-11 1/2")
P — Center of rotation to center rear bogie	1,070 mm (3'-6")
Q — Distance between axles (front and rear)	1,525 mm (5'-0")
R — Wheelbase	5,840 mm (19'-2")
S — Center of rear bogie to rear of carrier	2,240 mm (7'-4")
T — Overall length of carrier (with outriggers and without front bumper counterweight)	10,020 mm (32'-10 1/2")
U — Overall width of carrier	3,370 mm (11'-0 3/4")
V — Turning circle (min.) radius	11,800 mm (38'-9")
W — Back of truck cab to center of rear bogie	5,830 mm (19'-1 1/4")

# CRANE SPECIFICATIONS

## GENERAL DATA

### BOOM—HEAVY-DUTY:

Tubular high tensile alloy steel chords, lattice construction, pin connected.  
 Extendible up to 67.06 m (220 Ft.)  
 Length—boom base section ..... 7.62 m (25 Ft.)  
     —boom tip section ..... 7.62 m (25 Ft.)  
 Open throat, cross section 1.75 m<sup>2</sup> (69<sup>th</sup> sq.) with five boom point sheaves offset from centerline, on anti-friction bearings, pitch diameter ..... 613 mm (24<sup>3</sup>/<sub>8</sub>"

### BOOM—LIGHT DUTY:

Tubular high tensile alloy steel chords, lattice construction, pin connected.  
 Extendible up to 82.30 m (270 Ft.)  
 Length—boom base section ..... 7.62 m (25 Ft.)  
     —boom tip section ..... 9.14 m (35 Ft.)  
 Open throat, cross section 1.75 m<sup>2</sup> (69<sup>th</sup> sq.) with three boom point sheaves offset from centerline, on anti-friction bearings, pitch diameter ..... 613 mm (24<sup>3</sup>/<sub>8</sub>"

### BOOM—HAMMERHEAD:

Tubular high tensile alloy steel chords, lattice construction, pin connected.  
 Extendible up to 60.96 m (200 Ft.)  
 Length—boom base section ..... 7.62 m (25 Ft.)  
     —boom tip section ..... 4.57 m (15 Ft.)  
 (Limited to use with up to maximum of 60.96 m (200 Ft.) boom)  
 Hammerhead arrangement, cross section 1.75 m<sup>2</sup> (69<sup>th</sup> sq.) with seven boom point sheaves on anti-friction bearings, pitch diameter ..... 613 mm (24<sup>3</sup>/<sub>8</sub>"

### BOOM HOIST REEVING:

12 parts of line—spreader sheaves on anti-friction bearings, pitch diameter ..... 325 mm (12<sup>3</sup>/<sub>8</sub>"

### HOOK BLOCK

Three sheave with safety swivel hook and five part hoist line, standard. 40 ton

### POWER CONTROLLED LOAD LOWERING:

Planetary device for lowering loads under power control. Standard on front and rear drums.

### GANTRY:

High gantry, telescoping type—three position—power raised, standard.  
 Mast gantry, boom foot type—required for machines equipped with booms 70.10 m (230 Ft.) and over optional extra.

### WORKING WEIGHT:

Basic crane (including heavy duty boom and block) approx. .... 75,000 kg (165,000 lbs.)  
 Counterweight (included in working weight) ..... 18,500 kg (40,700 lbs.)  
 Furnished as standard ..... 18,500 kg (40,700 lbs.)  
 Additional counterweight for maximum crane rating to be used only with outriggers fully extended) optional extra ..... 9,700 kg (21,300 lbs.)  
 Front bumper counterweight (2 pcs.) (required for booms 70.10 m (230 Ft.) and longer) (optional extra) ..... 13,800 kg (30,400 lbs.)

## MAXIMUM BOOM LENGTHS MACHINE CAN LIFT OFF GROUND in m (Ft.)

with Standard 18,500 kg (41,000 Lbs.) Counterweight

	WITH OUTRIGGERS		WITHOUT OUTRIGGERS	
	Boom Only	Boom & Jib	Boom Only	Boom & Jib
Side	60.96 (200)	54.86 & 15.24 (180 & 50)	39.62 (130)	33.53 & 9.14 (110 & 30)
Rear	67.06 (220)	60.96 & 18.29 (200 & 60)	39.62 (130)	36.58 & 6.10 (120 & 20)
Rear Only with Required Bumper Counterweight	76.20 & 18.29 (250 & 60)			

with Additional 9,700 kg (21,340 Lbs.) Counterweight (Total 28,200 kg (62,040 Lbs.))

	WITH OUTRIGGERS	
	Boom Only	Boom & Jib
Rear Only with Required Bumper Counterweight	76.20 & 18.29 (270 & 60)	

## DRUM SHAFT ASSEMBLY

Crane Leggings (Smooth) (P.D.)	Cable Dia.	Max. Cable Capacity	*Line Pulls	*Line Speeds
Front—533 mm (21")	26 mm (1")	297 m (975')	12,200 kg (26,840 lbs.)	57.3 m/min. (175 F.p.m.)
Rear—533 mm (21")	26 mm (1")	297 m (975')	12,640 kg (27,810 lbs.)	57.3 m/min. (175 F.p.m.)

\*Line pulls and speeds based on single line and first layer of rope and engine at full load speed.

## MAXIMUM JIB RATINGS in Kg (Lbs.)

Offset Angle Jib to Boom under Full Load	6.10 m (20') Jib	9.14 m (30') Jib	12.19 m (40') Jib	15.24 m (50') Jib	18.29 m (60') Jib
10°	10,730 (23,660)	7,150 (15,800)	5,720 (12,600)	4,650 (10,300)	4,830 (8,400)
20°	8,950 (19,700)	6,440 (14,200)	5,180 (11,400)	4,150 (9,200)	3,500 (7,700)
30° Max	8,220 (18,100)	6,080 (13,400)	4,820 (10,600)	3,930 (8,700)	3,320 (7,300)

Jib crane rating at any radius from center of rotation is the same rating as for main boom when operated at the same radius, but not to exceed maximum jib ratings shown. For bucket ratings on jib deduct 20% from jib ratings. Maximum jib operating radius not to exceed length of main boom on which it is being used. Use of outriggers recommended when boom is equipped with jib.

## CRANE RATED LOADS in Kgs. (Lbs.)—LIGHT DUTY BOOM WITHOUT OUTRIGGERS

Oper. Rad. in m (Ft.)	12.19 m (40') Boom		15.24 m (50') Boom		18.29 m (60') Boom		21.34 m (70') Boom		24.38 m (80') Boom		27.43 m (90') Boom		30.48 m (100') Boom		33.53 m (110') Boom		36.58 m (120') Boom		39.62 m (130') Boom	
	Over Side	Over Rear	Over Side	Over Rear	Over Side	Over Rear	Over Side	Over Rear	Over Side	Over Rear	Over Side	Over Rear	Over Side	Over Rear	Over Side	Over Rear	Over Side	Over Rear	Over Side	Over Rear
3.66 (12)	50349 (111000)	55339 (122000)	50122 (110500)	55112 (121500)	...	...	...	...	...	...	...	...	...	...	...	...	...	...	...	...
4.57 (15)	36968 (81500)	41051 (90500)	36832 (81200)	40914 (90200)	36696 (80900)	40778 (89900)	...	...	...	...	...	...	...	...	...	...	...	...	...	...
6.10 (20)	25129 (55400)	28168 (62100)	24993 (55100)	28032 (61800)	24857 (54800)	27896 (61500)	24812 (54700)	27851 (61400)	...	...	...	...	...	...	...	...	...	...	...	...
7.62 (25)	18870 (41600)	21274 (46900)	18734 (41300)	21138 (46600)	18597 (41000)	21002 (46300)	18552 (40900)	20956 (46200)	18461 (40700)	20865 (46000)	18371 (40500)	20729 (45700)	18235 (40200)	20639 (45500)	...	...	...	...	...	...
9.14 (30)	14969 (33000)	16965 (37400)	14883 (32700)	16828 (37100)	14697 (32400)	16692 (36800)	14651 (32300)	16647 (36700)	14606 (32200)	16556 (36500)	14470 (31900)	16466 (36300)	14334 (31600)	16329 (36000)	14198 (31300)	16193 (35700)	14062 (31000)	16012 (35300)	13109 (35000)	11431 (34700)
10.67 (35)	12338 (27200)	14016 (30900)	12202 (26900)	13880 (30600)	12066 (26600)	13744 (30300)	12020 (26500)	13699 (30200)	11930 (26300)	13653 (30100)	11839 (26100)	13517 (29800)	11703 (29500)	13381 (29200)	11567 (29000)	13245 (28700)	11438 (28500)	13109 (28200)	11431 (27900)	13109 (27600)
12.19 (40)	10433 (23000)	11884 (26200)	10297 (22700)	11748 (25900)	10161 (22400)	11612 (25600)	10070 (22200)	11567 (25500)	10024 (22100)	11521 (25400)	9888 (21800)	11385 (25100)	9752 (24800)	11249 (24500)	9616 (24200)	11113 (24000)	9480 (23700)	10977 (23500)	9526 (23200)	10977 (22900)
13.72 (45)	...	...	8845 (19500)	10161 (22100)	8709 (19200)	10024 (21900)	8618 (19000)	9934 (21800)	8573 (18800)	9888 (21500)	8437 (18600)	9752 (21200)	8301 (18300)	9616 (21000)	8165 (18000)	9480 (20900)	8029 (17700)	9344 (20600)	8074 (17800)	9389 (20700)
15.24 (50)	...	...	7111 (15700)	8391 (19600)	7075 (16700)	8254 (19300)	7039 (16500)	8118 (19100)	7003 (16400)	6868 (19000)	6733 (18700)	6598 (18500)	6463 (18300)	6328 (18100)	6193 (17800)	6058 (17500)	5923 (17300)	5788 (17100)	5653 (16800)	5518 (16500)
18.29 (60)	...	...	...	5942 (13100)	6895 (15200)	5851 (12900)	6804 (15000)	5761 (12700)	6713 (14800)	5625 (12400)	6589 (14600)	5552 (12100)	6466 (14300)	5489 (11800)	5352 (11600)	5216 (11500)	5082 (11300)	4947 (11100)	4812 (10800)	4677 (10600)
21.34 (70)	...	...	...	...	4672 (10300)	5534 (12200)	4581 (10100)	5481 (12000)	4467 (9850)	5343 (11700)	4307 (9550)	5207 (11400)	4141 (9250)	4985 (11100)	4018 (8950)	3852 (8650)	3717 (8350)	3582 (8050)	3447 (7750)	3312 (7450)
24.38 (80)	...	...	...	...	...	3741 (8250)	4467 (9850)	3605 (8000)	4331 (9550)	3469 (7700)	4183 (9250)	3307 (7400)	4018 (9000)	3157 (8700)	2982 (8400)	2807 (8100)	2632 (7800)	2457 (7500)	2282 (7200)	2107 (6900)
27.43 (90)	...	...	...	...	...	...	...	...	...	2970 (6550)	3605 (7950)	2834 (7650)	3469 (9000)	2698 (8300)	3333 (8000)	2540 (7700)	3197 (8400)	2562 (7900)	2427 (7600)	2292 (7300)
30.48 (100)	...	...	...	...	...	...	...	...	...	...	2313 (5100)	2903 (6400)	2744 (6100)	2589 (5800)	2434 (5500)	2279 (5200)	2124 (4900)	1969 (4600)	1814 (4300)	1659 (4000)

For all operating conditions and instructions refer to notes under main rating plate.



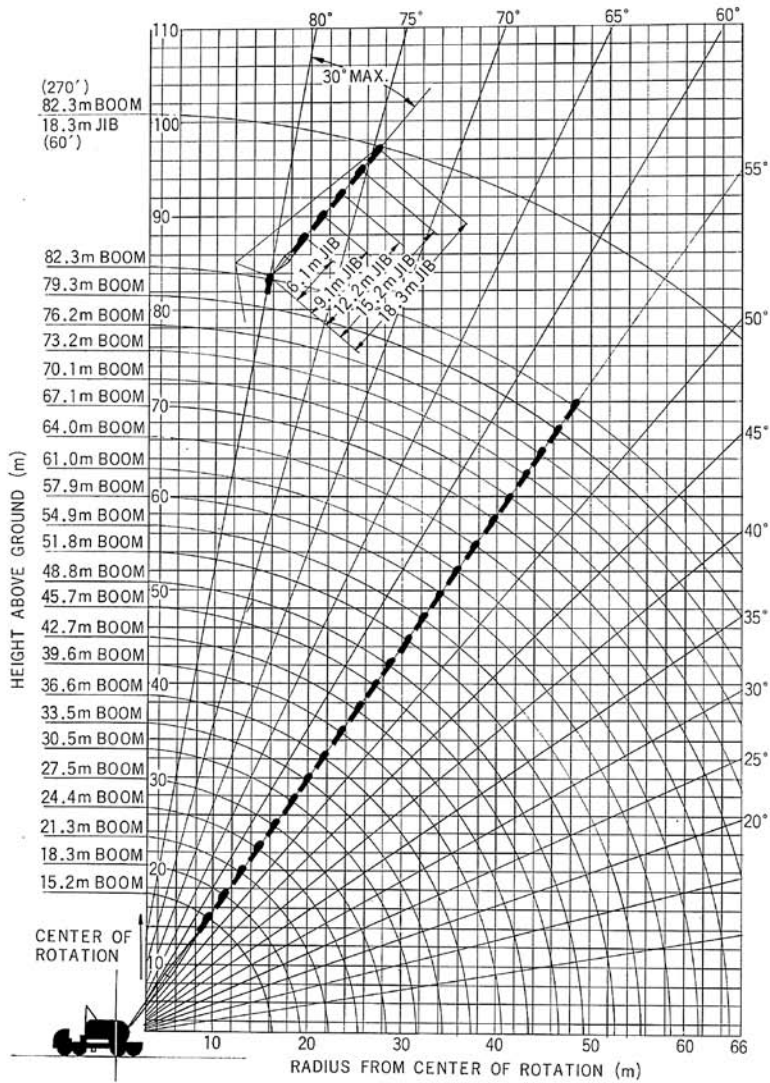






### HOIST REEVING

No. of Parts of Line	1	2	3	4	5	6	7	8	9	10
Maximum Load in Kg (Lbs.)	12,610 (27,800)	25,220 (55,600)	37,830 (83,400)	50,440 (111,200)	63,050 (139,000)	75,660 (166,800)	88,270 (194,600)	100,880 (222,400)	113,400 (250,000)	127,000 (280,000)







**Higher Production Capacities  
Lower Operating Costs**

Data published herein are statistical and for information only. Performance may vary with the conditions encountered. Kobe Steel, Ltd. reserves the right to make changes in specifications without advance notice.

Licensed by HARNISCHFEGER INTERNATIONAL CORPORATION  
Milwaukee, Wisconsin, U.S.A.



**KOBE STEEL, LTD.**

CONSTRUCTION MACHINERY DIVISION

Tokyo Head Office: Tekko Bldg.,

No. 8-2, 1-chome, Marunouchi, Chiyoda-ku, Tokyo, Japan Phone: Tokyo (03) 218-7111  
Cable: "KOBESTEEL TOKYO" Telex: No. 222-3601 (KOBESTEEL TOK)

Construction

Machinery Plant: 123, Fukuda, Okubo-cho, Akashi-city, Japan  
Cable: "KOBESTEEL AKA"

Phone: Akashi (078) 936-1331  
Telex: No. 5628944 (KOBESTL J)

---

Address Inquiries to: